



Printer driver user guide for

- **REINER jetStamp 970**
 - **REINER 940**

Version 6.0.17.8250

949014-000-A

© 2013 Ernst Reiner GmbH & Co. KG

All rights reserved. Translations, reprints, or any other form of reproduction of this manual, even in part and regardless of form, require our prior, express written permission.

We reserve the right to change the contents of this manual without prior notice.

This manual has been compiled with great care, however we cannot accept liability for any errors or defects or for damage resulting from them

Ernst Reiner GmbH & Co. KG

Postfach 1351

D-78115 Furtwangen

Tel. (0) 7723/657-0

Fax (0) 7723/657200

E-Mail: reiner@reiner.de

Internet: <http://www.reiner.de>

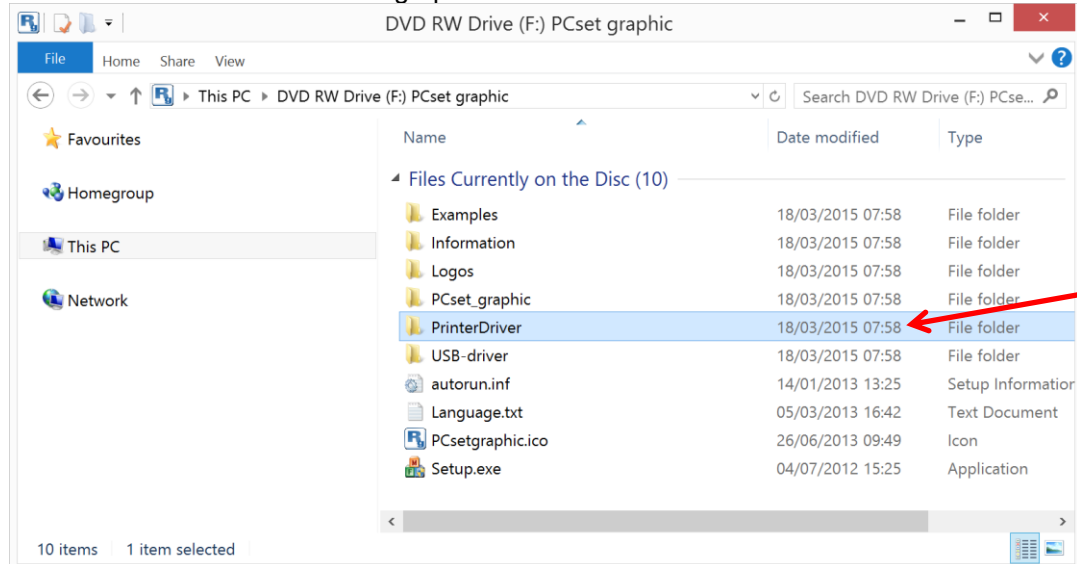
Table of contents

1. Install printer driver	4
2. Generals about printer driver	16
a. Prepare printer and check status of print job	16
b. Basic settings (Printing preferences)	17
c. Basic settings (Printer properties)	19
3. Use printer driver as Standard Windows printer driver.....	21
a. Printing with Notepad	21
b. Printing with Windows Photo Viewer	22
c. Printing with Excel	23
d. Printing with WordPad.....	26
e. Printing with Word	29
4. Use printer driver with extended functions	33
a. Create and print simple Label.....	33
b. Create and print difficult label with Counter, Date/Time and variable Barcode	35

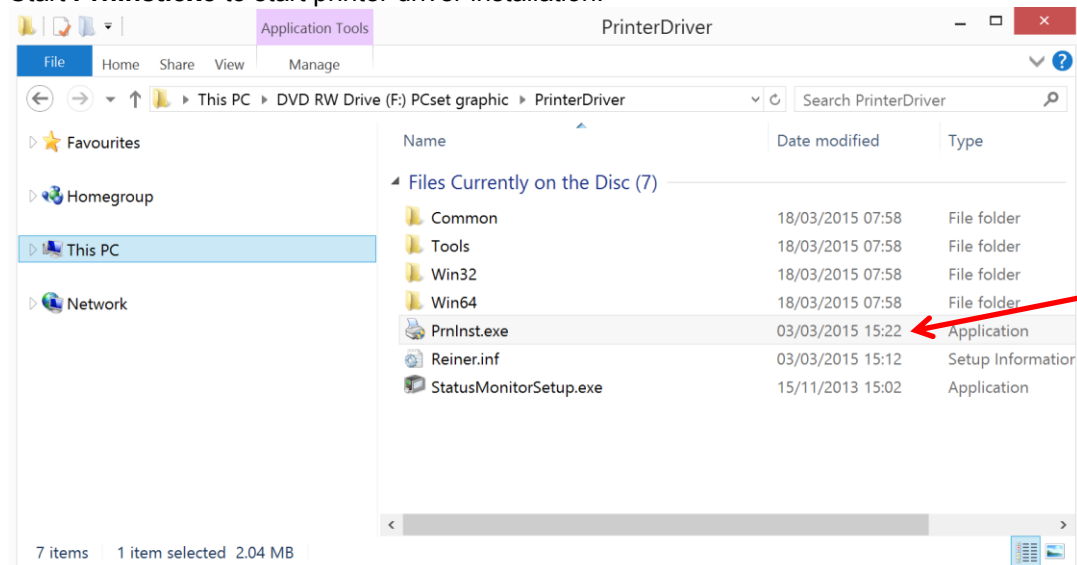
1. Install printer driver

Printer driver will be delivered via PCset graphic.

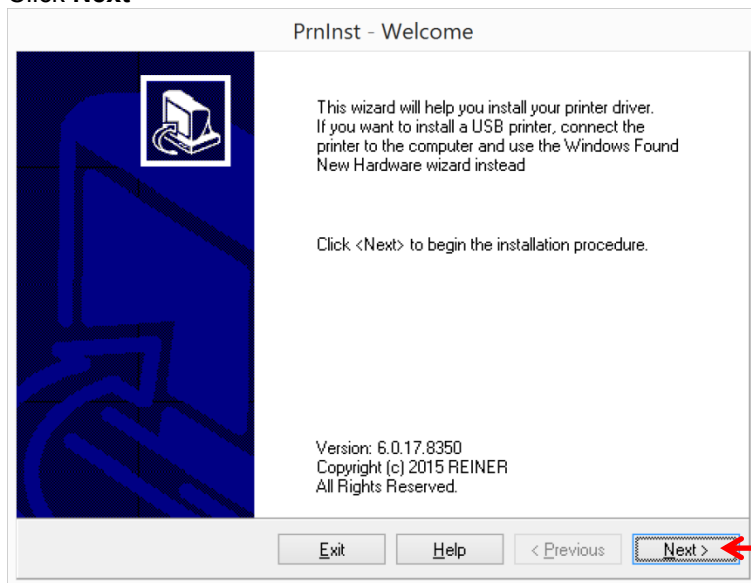
Printer driver is stored on PCset graphic CD-ROM in folder **PrinterDriver**.



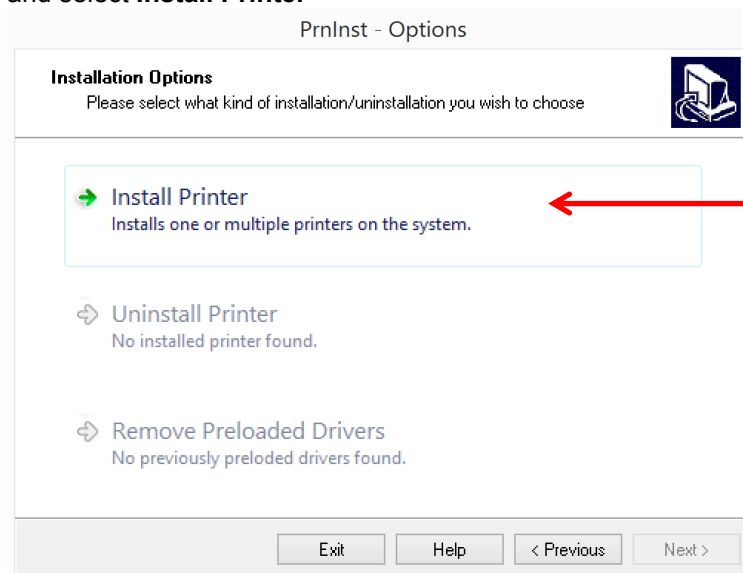
Start **PnnInst.exe** to start printer driver installation.



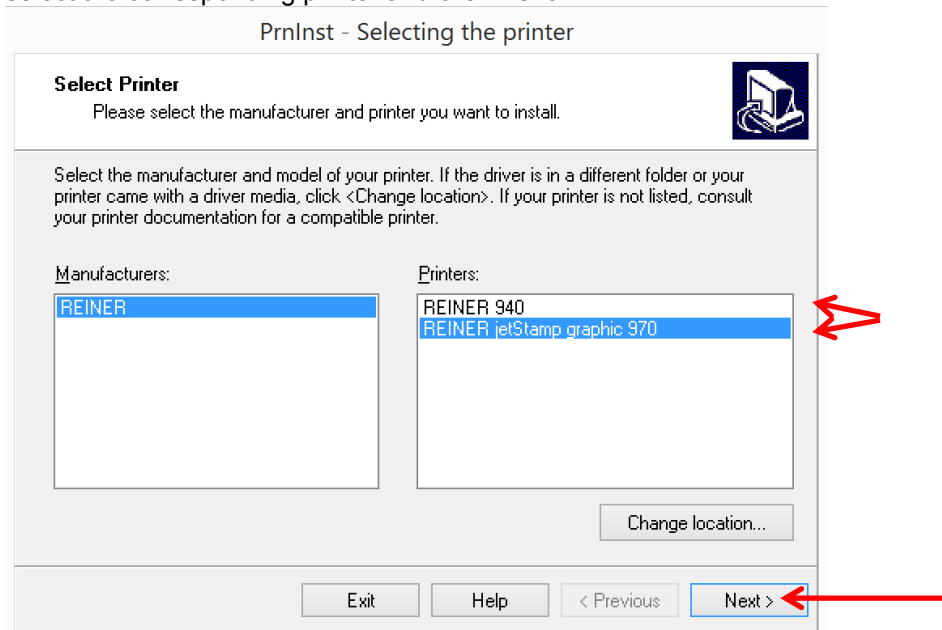
Click **Next >**



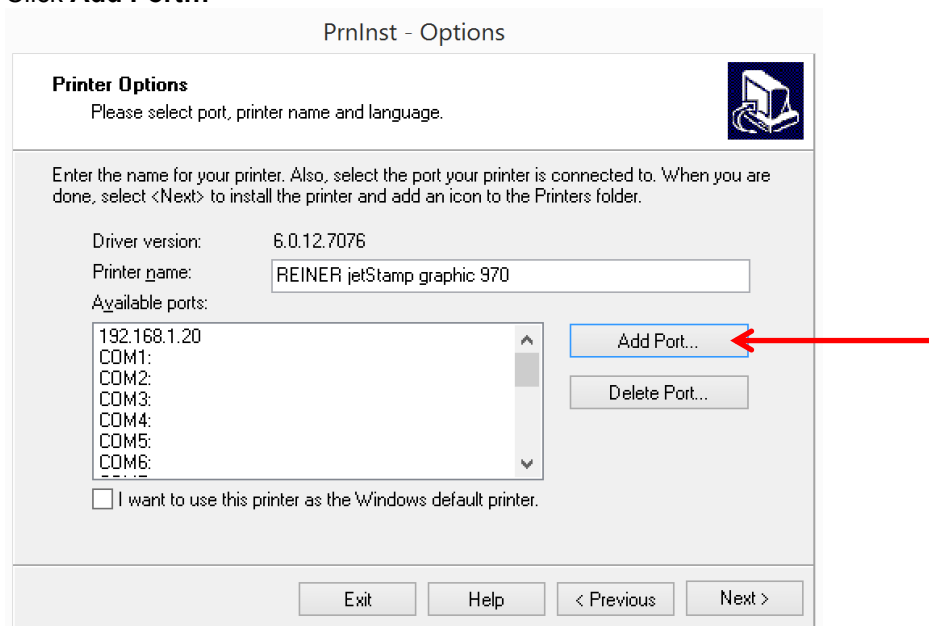
and select **Install Printer**



select the corresponding printer and click **Next >**

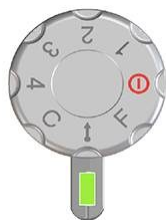


Click **Add Port...**



and select the **communication typ** and select **Next >**.

Important: Switch on the device by turning the set wheel of REINER device to position Online/Bluetooth.




In case of USB


PrnInst - Add New Port

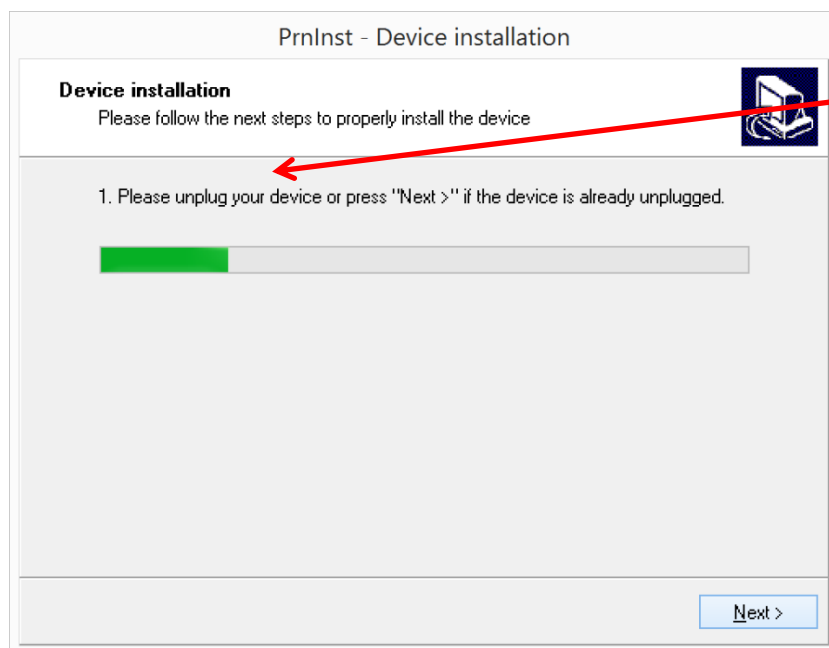
Add Port
Please select a port type to install a new port

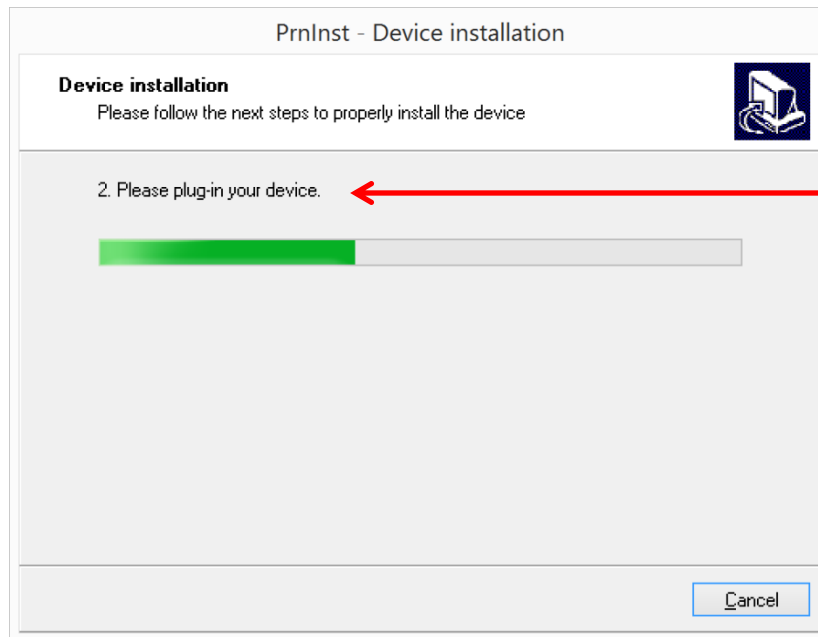
To install new port on your system first select a suitable port type. In case of Bluetooth port please check if your device is correctly paired.

☒ USB 

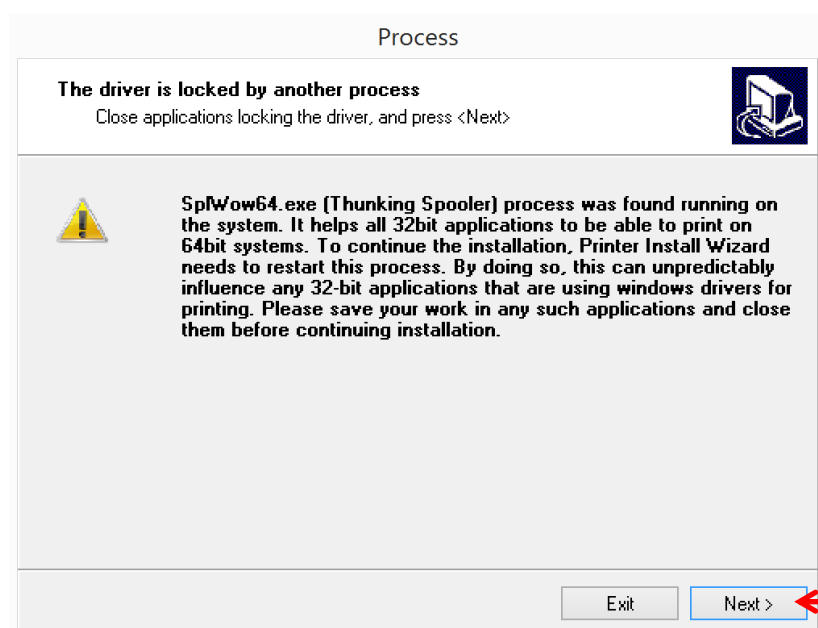
☐ Bluetooth

Next > 

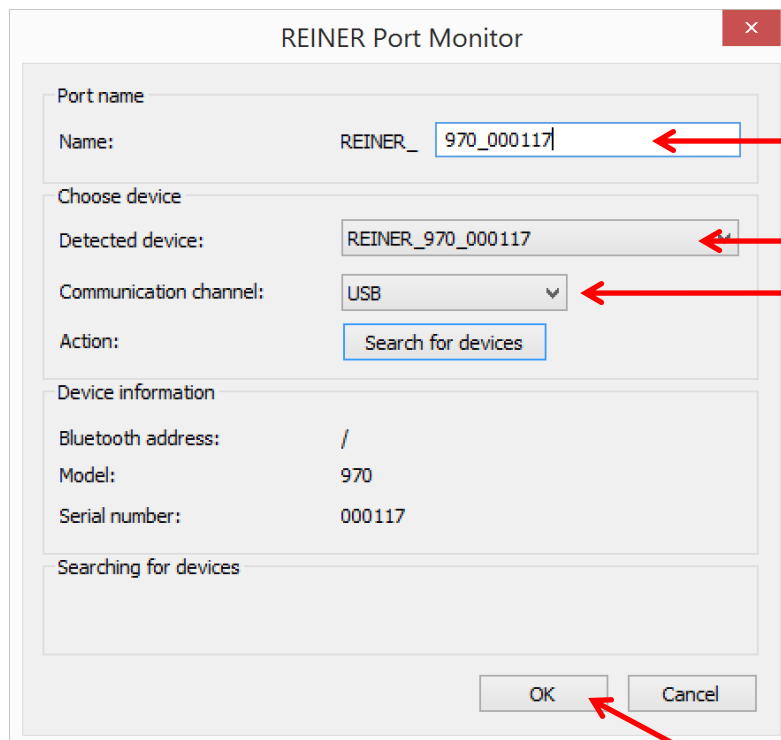




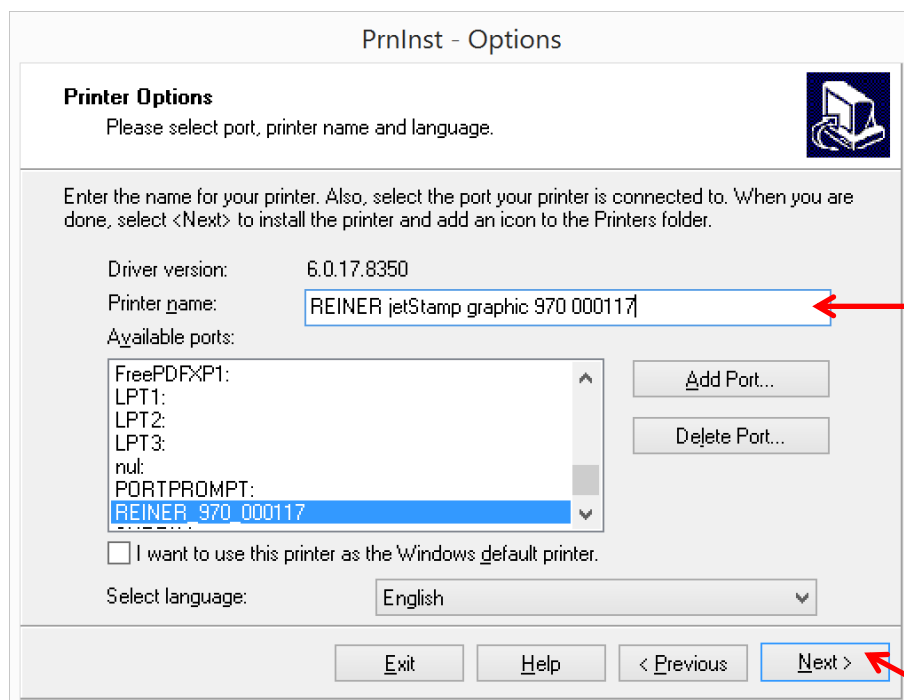
Click **Next >** if the following dialog will be displayed.



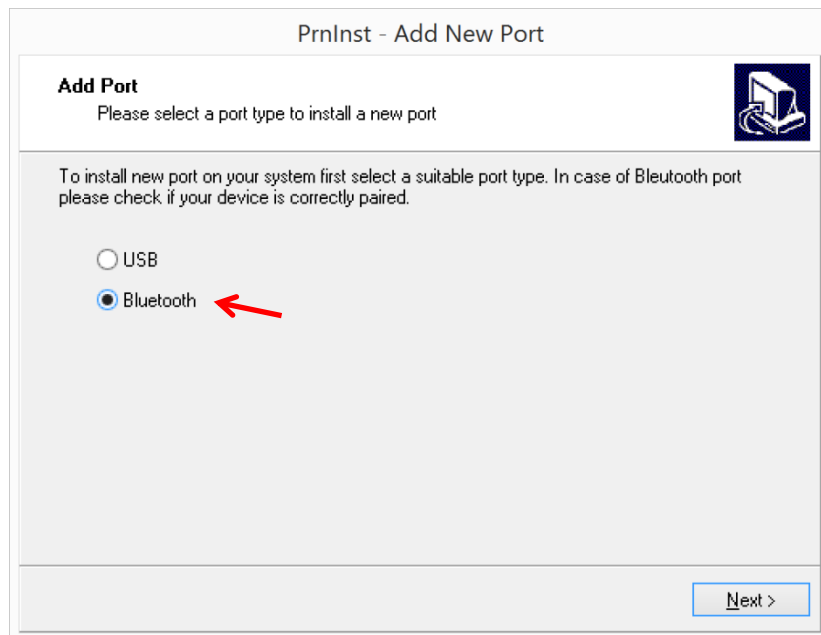
Check if correct device is selected.
Check if Communication channel is USB.
After that, expand the name by serial number.



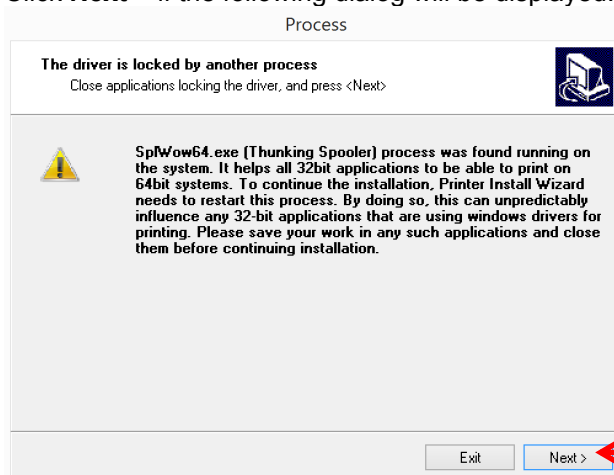
After adding the port, expand also the Printer name by serial number and press **Next >**



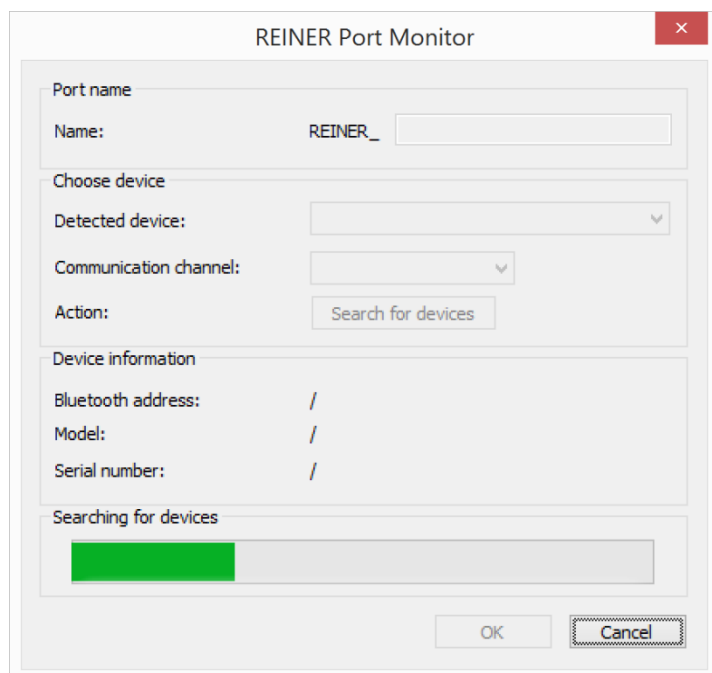
In case of Bluetooth



Click **Next >** if the following dialog will be displayed.

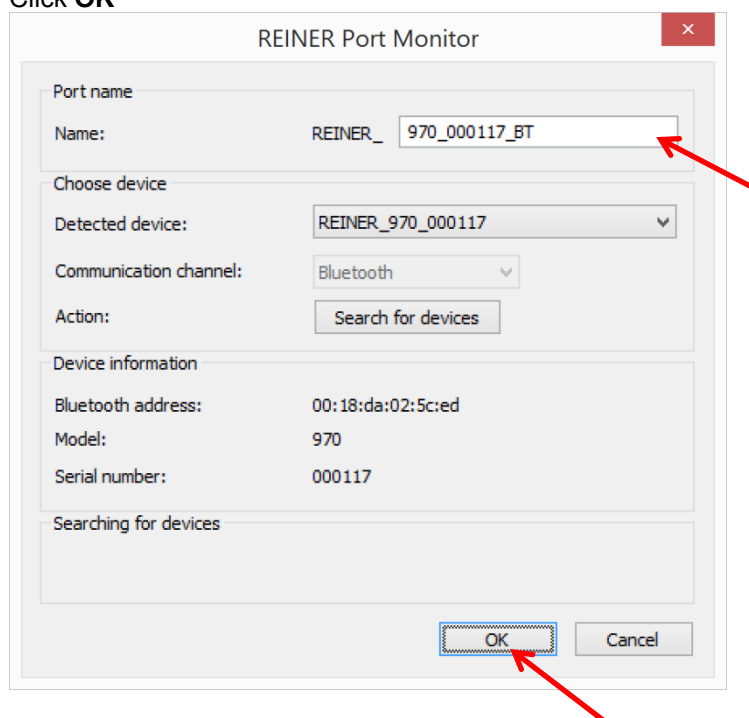


Printer driver is searching after available REINER devices.

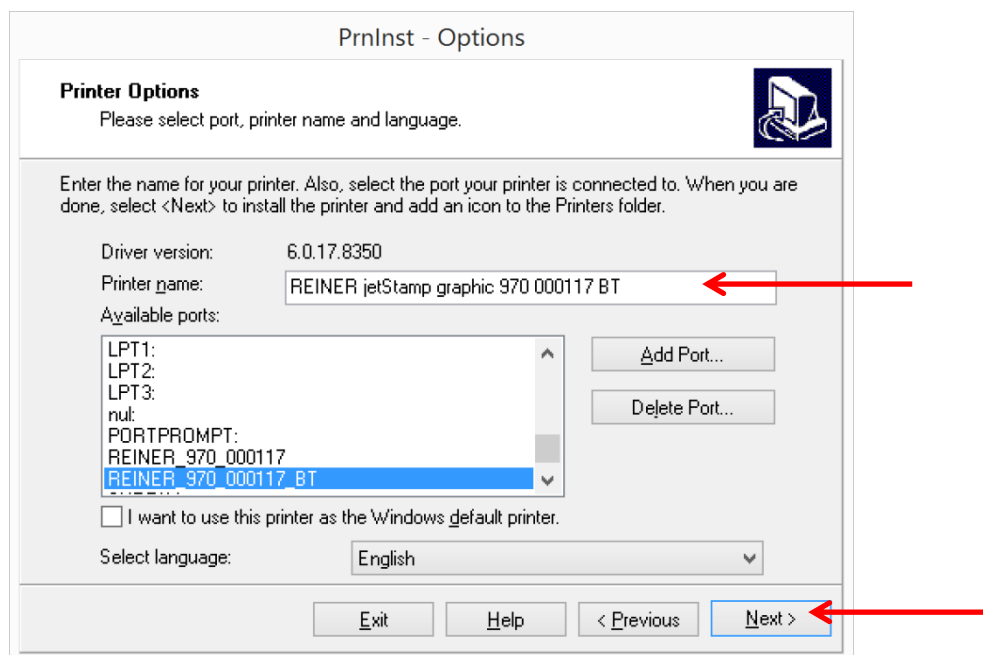


If found, expand the name by serial number as shown below.

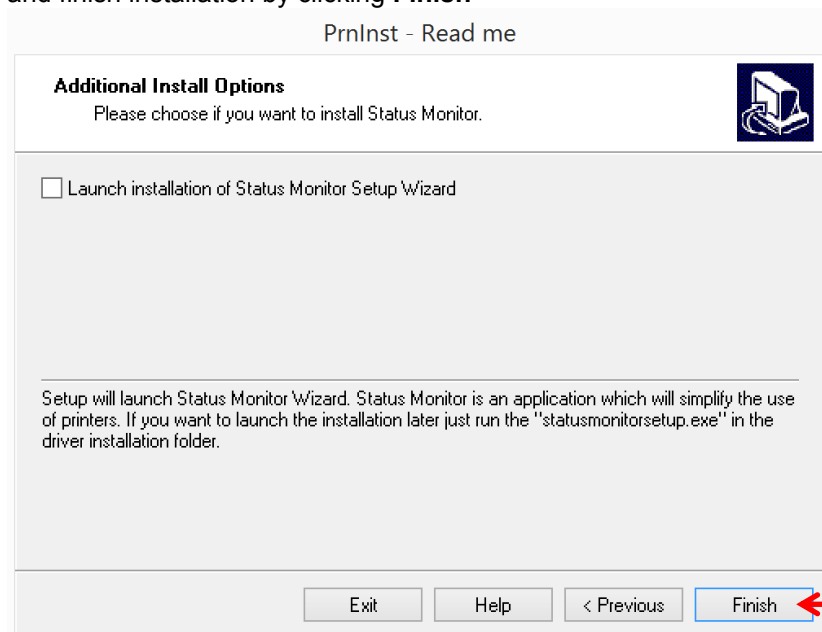
Click **OK**



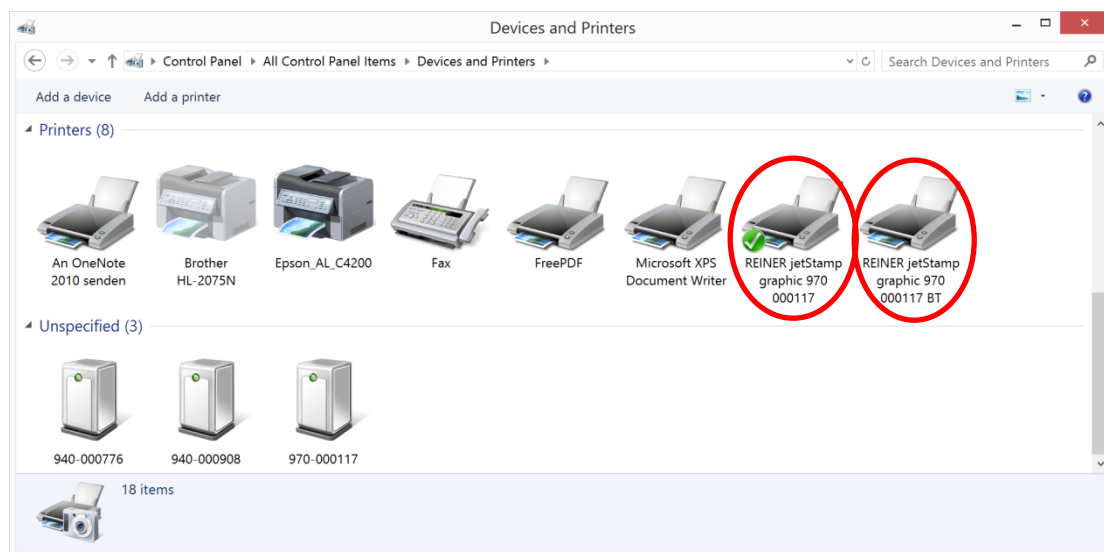
After adding the port, expand also the Printer name by serial number and by BT for Bluetooth and press **Next >**



and finish installation by clicking **Finish**



After successful installation printer driver should be displayed as printer device on page **Devices and Printers**



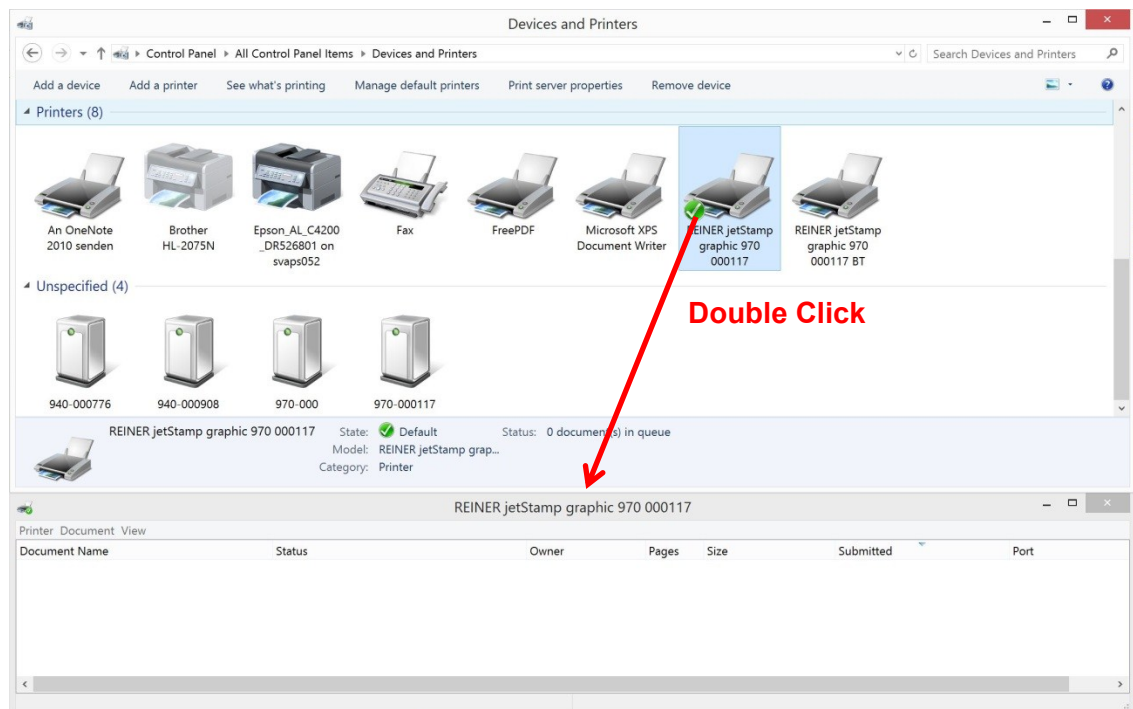
2. Generals about printer driver

a. Prepare printer and check status of print job

- To send print data to device set wheel must be in position Online/Bluetooth



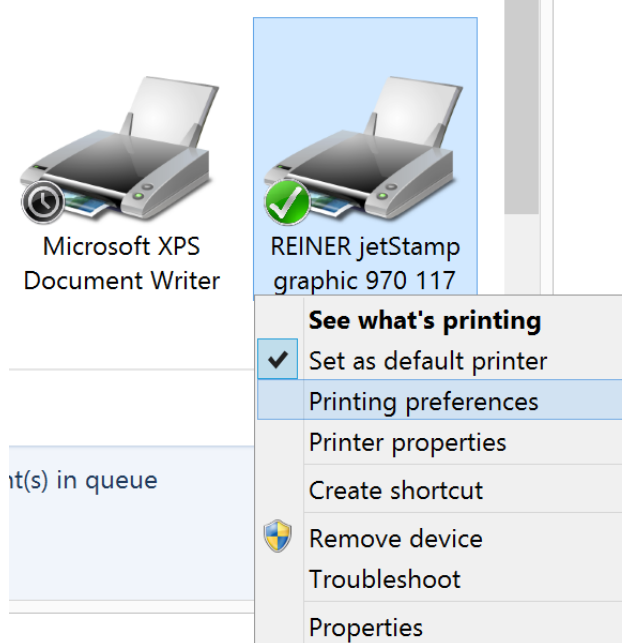
- When print job is successful sent to device, print job is listed in printer queue as long as print job isn't printed.
Printer queue can be found by double clicking printer symbol in **Devices and Printers**

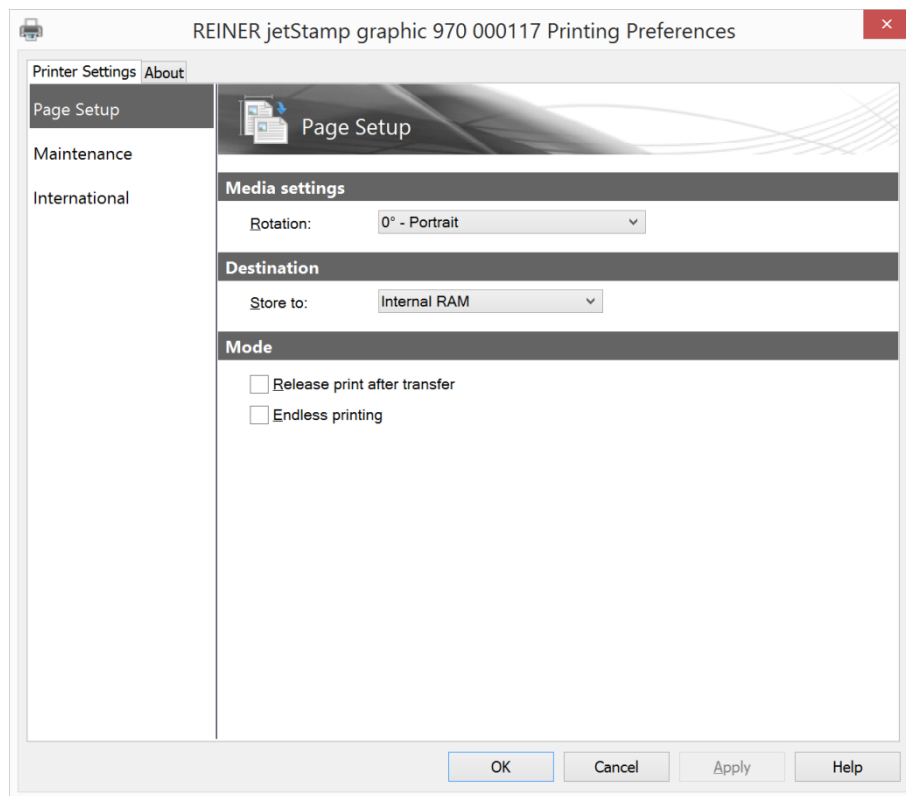


b. Basic settings (Printing preferences)

User can do user-defined settings of printer driver after installation.

To open the Printer preferences open in Windows the page **Devices and Printers** and right click onto the REINER device printer symbol and select **Printing preferences**.





Destination → Store to:

Internal RAM used when printer will be taken as desktop printer.
Print data are available as long as set wheel of device is in Online position.
Supports faster data transfer.

To printed the print data turn set wheel of device in Online position.

Internal FLASH used when printer will be taken as mobile printer, without frequently data transfer. Supports device internal functions like date/time, counter and variable barcode.
Print data will be stored in non-volatile memory in device. Print data are available after switching off/on device.
Supports slower data transfer than to internal RAM.
To print the print data turn set wheel of device to position 1.

Mode → Release print after transfer:

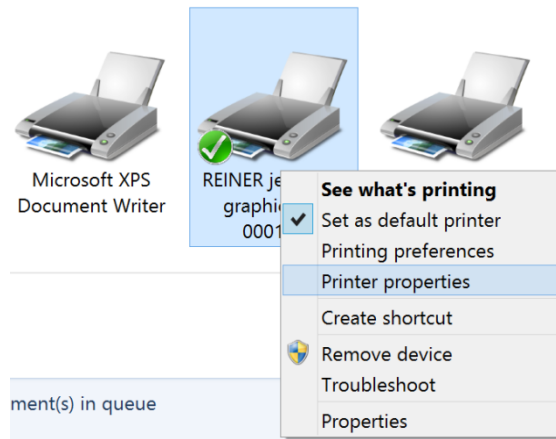
Printer will do a printout when print data are successfully received on device. Works only if **Internal RAM** is selected and device is on paper.

Mode → Endless printing:

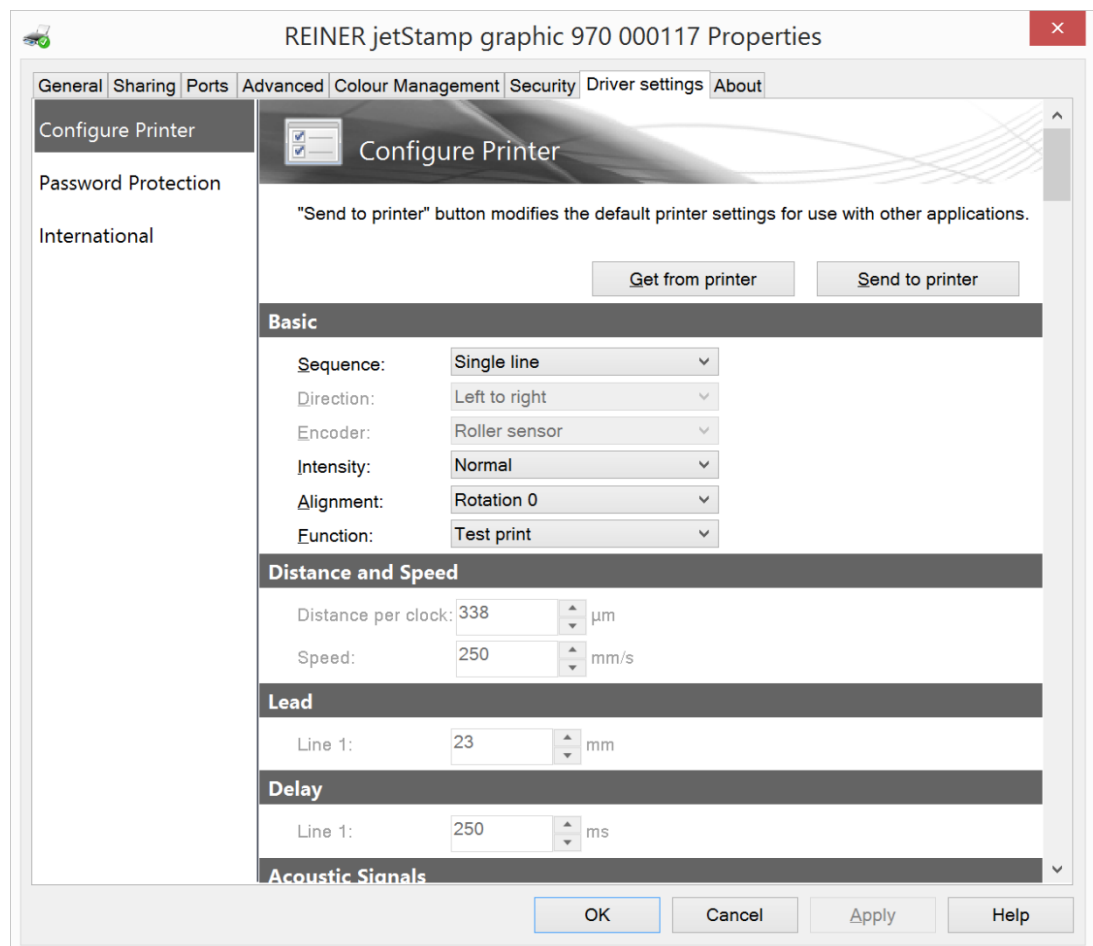
The last transmitted print job can be endless printed. As long as a new print job will be sent. Has only effect if **Internal RAM** is selected.

c. Basic settings (Printer properties)

To open the Printer properties open in Windows the page **Devices and Printers** and right click onto the REINER device printer symbol and select **Printing properties**.

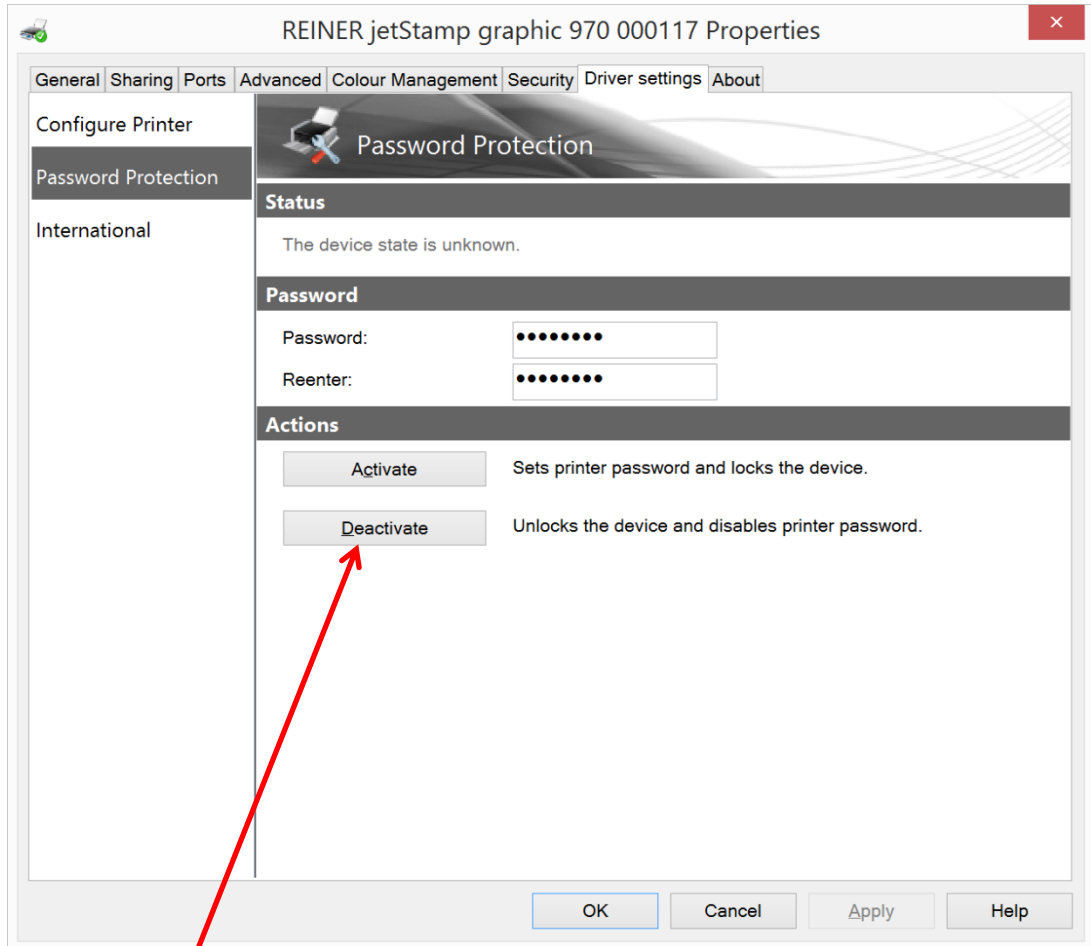


Select the property sheet **Driver settings**



IMPORTANT: To set and get printer properties, use the buttons **Get from printer** and **Send to printer**.

For description of settings parameter take help of PCset graphic chapter
The Software Application PCst graphic → Operating Interface → Device settings → Print settings.

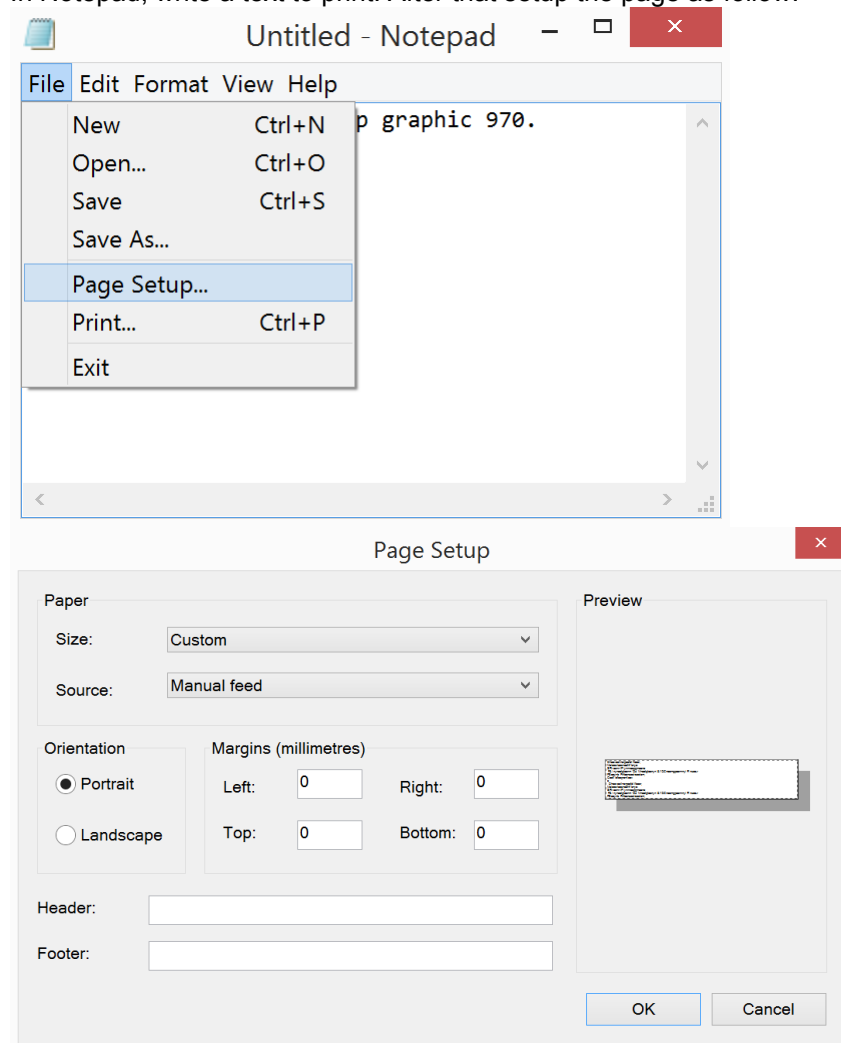


Password protection settings of device.
In some cases device can be password protected. To Deactivate password protection, click **Deactivate**

3. Use printer driver as Standard Windows printer driver

a. Printing with Notepad

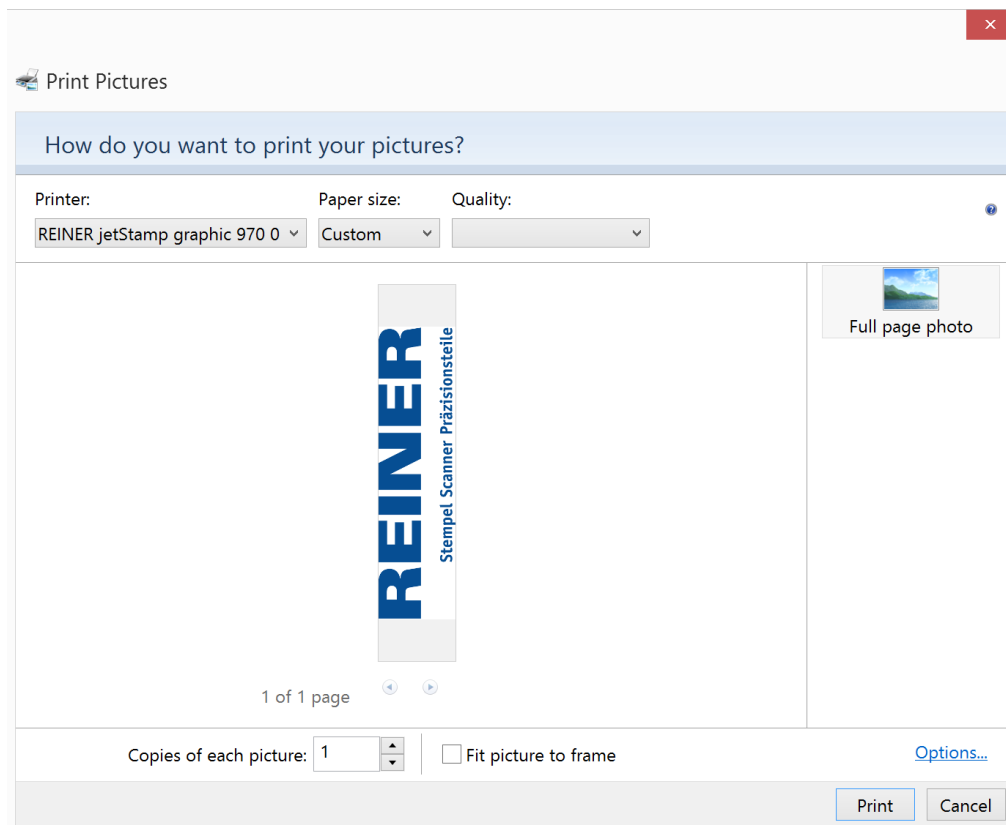
In Notepad, write a text to print. After that setup the page as follow:



Print text go to File → Print... → Select REINER Printer and click button “Print”.

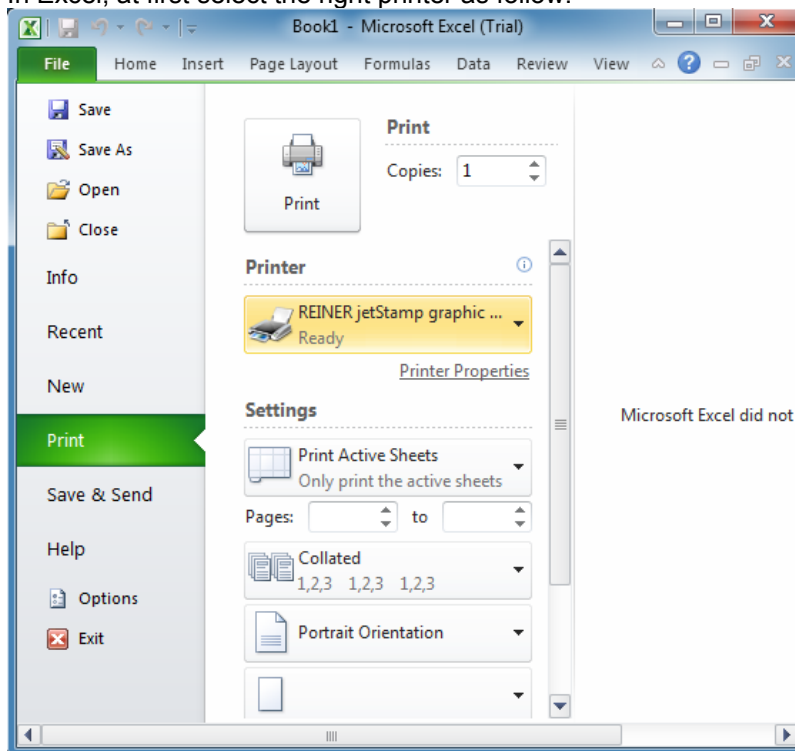
b. Printing with Windows Photo Viewer

Open a picture with Windows Photo Viewer. Go to "Print" → "Print ...", select REINER Printer and maybe uncheck option "Fit picture to frame", then press button "Print".

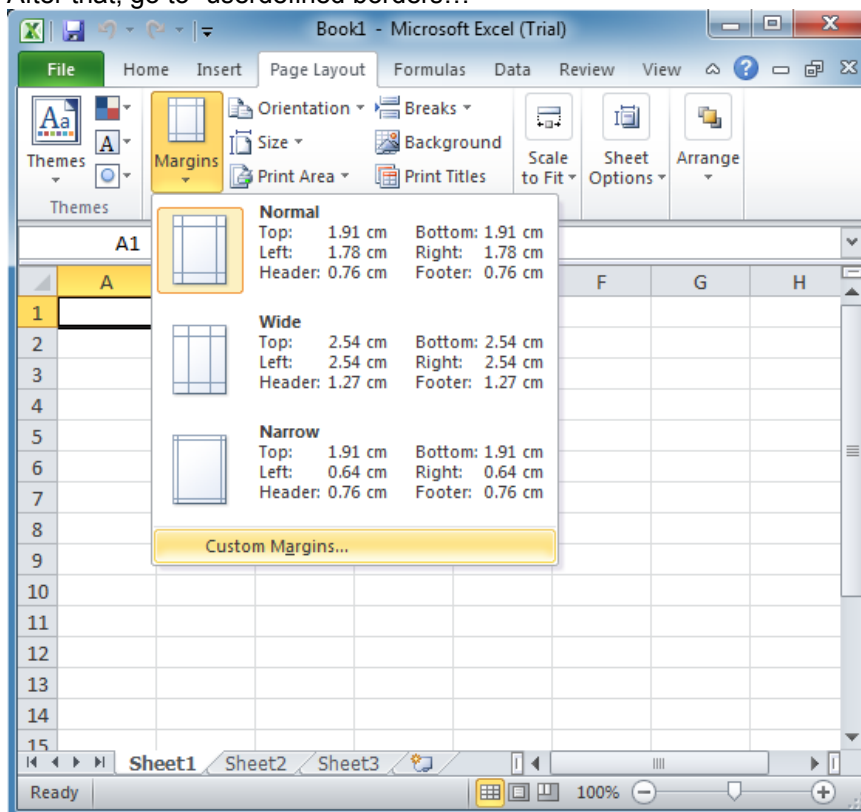


c. Printing with Excel

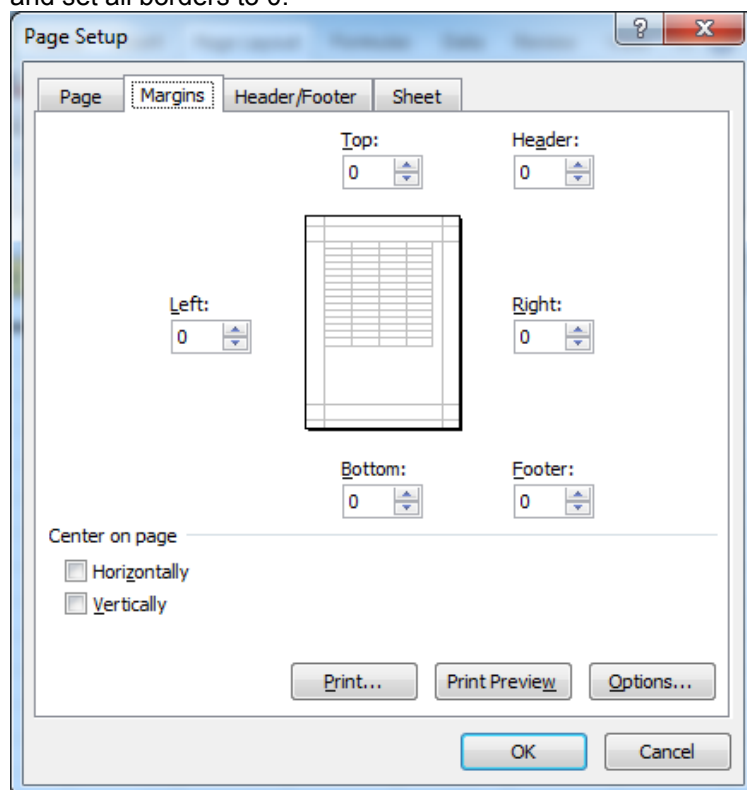
In Excel, at first select the right printer as follow:



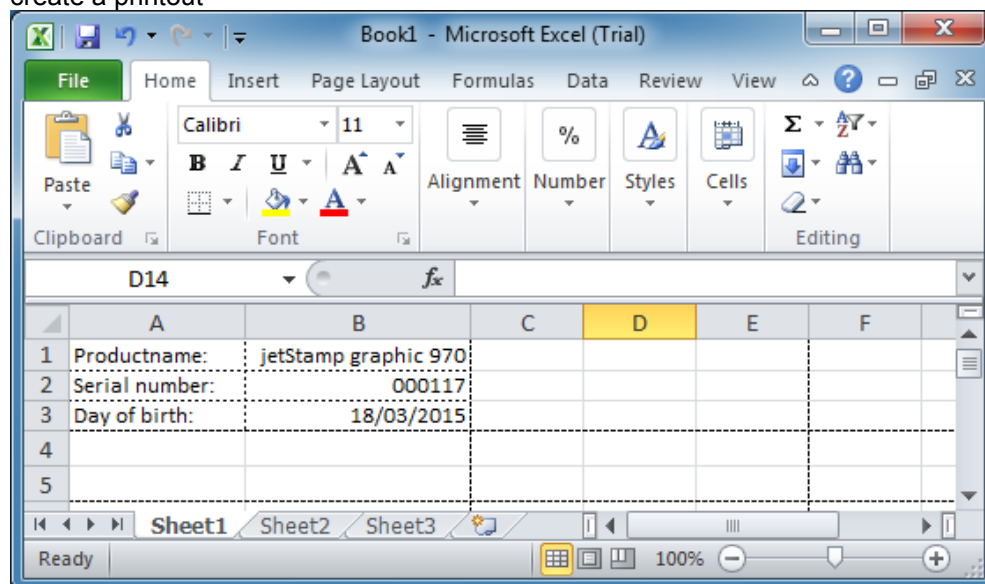
After that, go to “userdefined borders...”



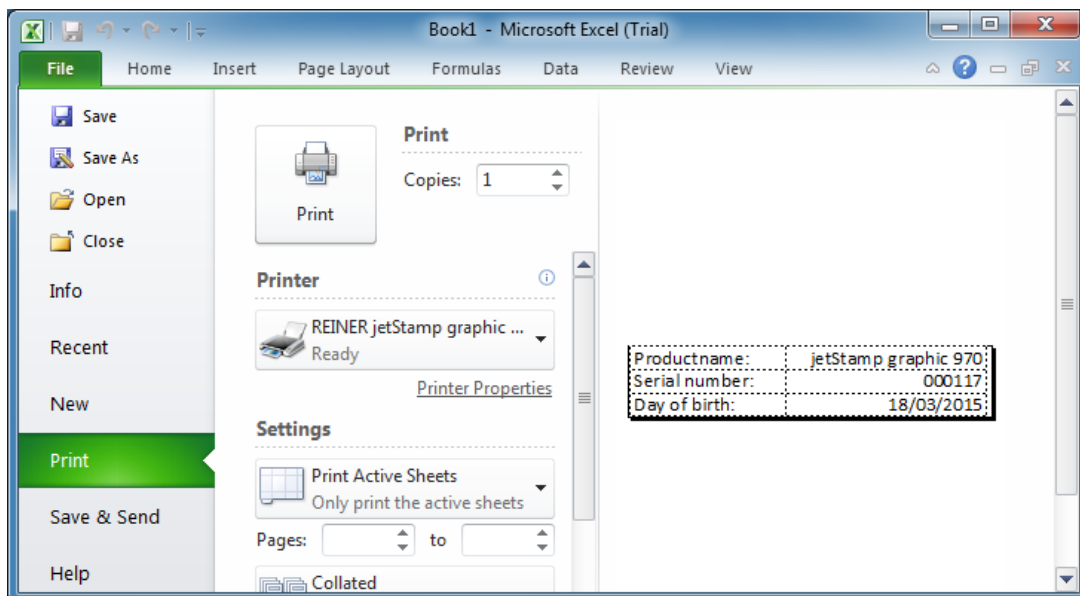
and set all borders to 0.



create a printout



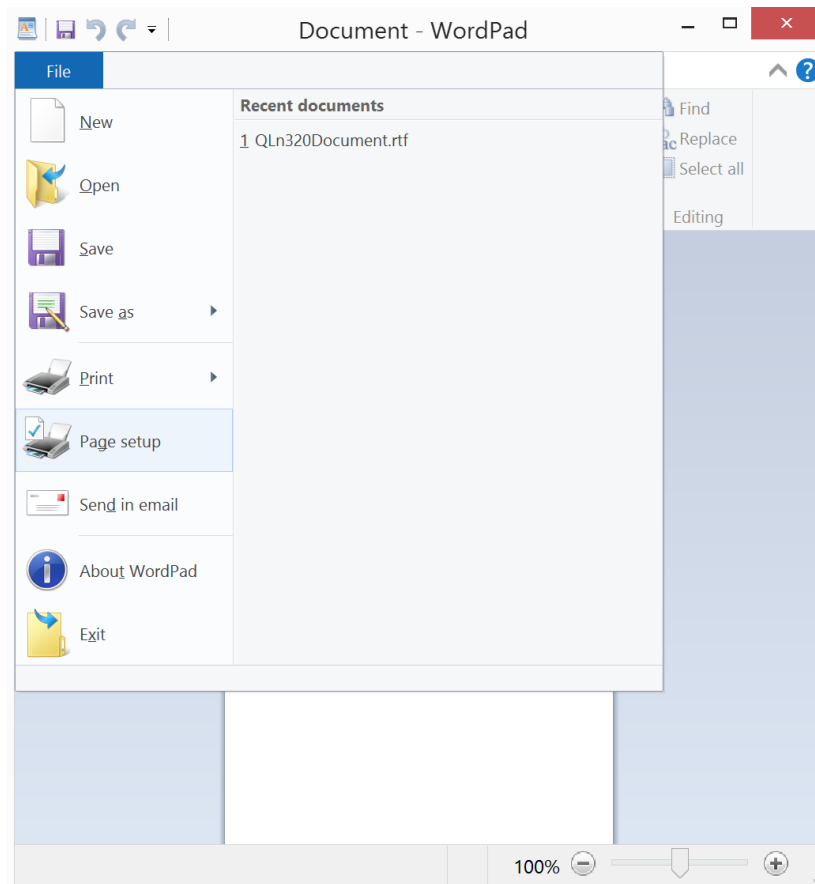
and go after that to File → Print



to send the print data to printer.

d. Printing with WordPad

In WordPad, at first select the right printer in File → Print.
After that setup the page as follow:



Page Setup

Size: Custom

Source: Manual feed

Orientation

☒ Portrait

☐ Landscape

Margins (millimetres)

Left: 0 Right: 0

Top: 0 Bottom: 0

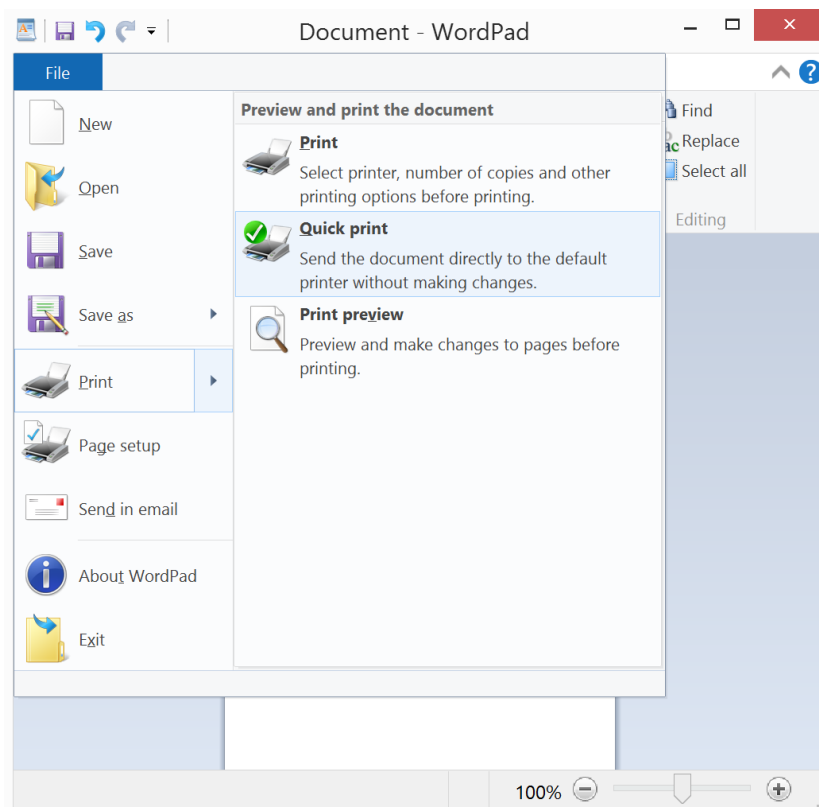
☐ Print Page Numbers

OK Cancel

Insert a text.

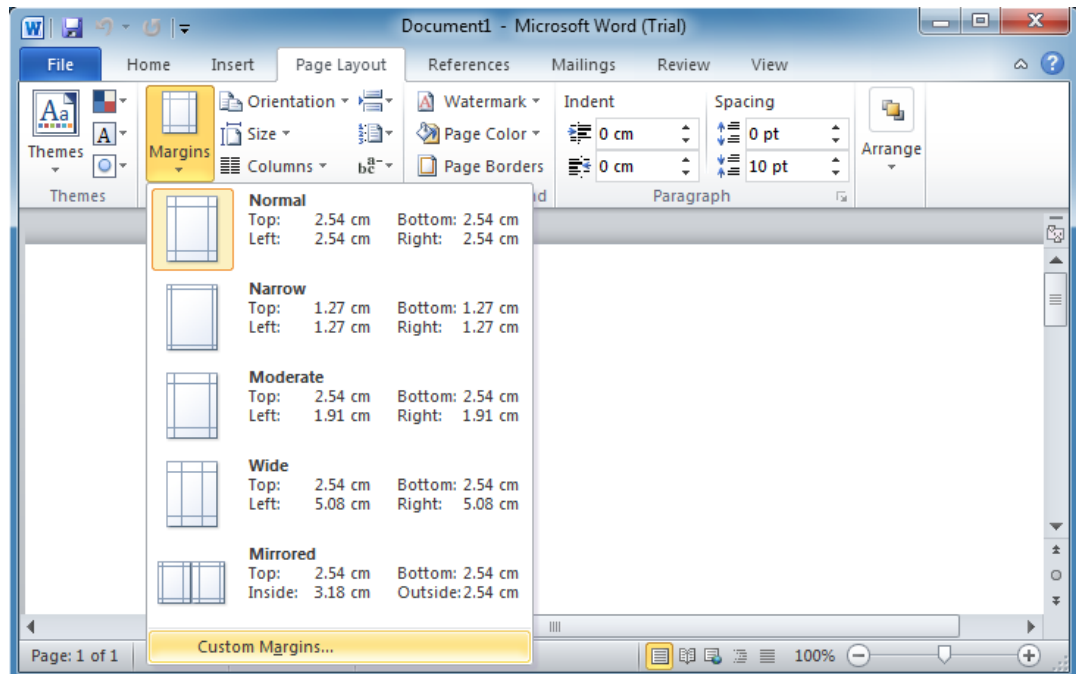
Note: The height of the print area is limited.

To print the document, go to File → Print, or File → Quick print.

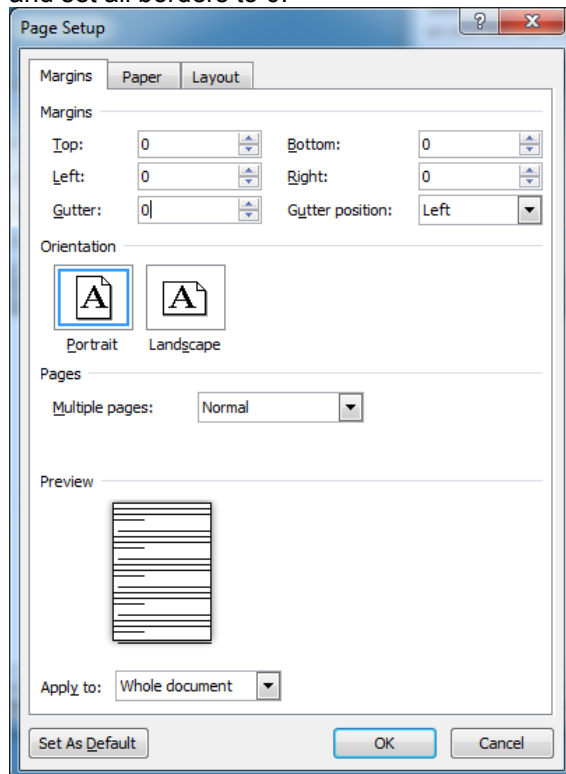


e. Printing with Word

In Word, at first select the right printer in File → Print.
After that, go to “userdefined borders...”

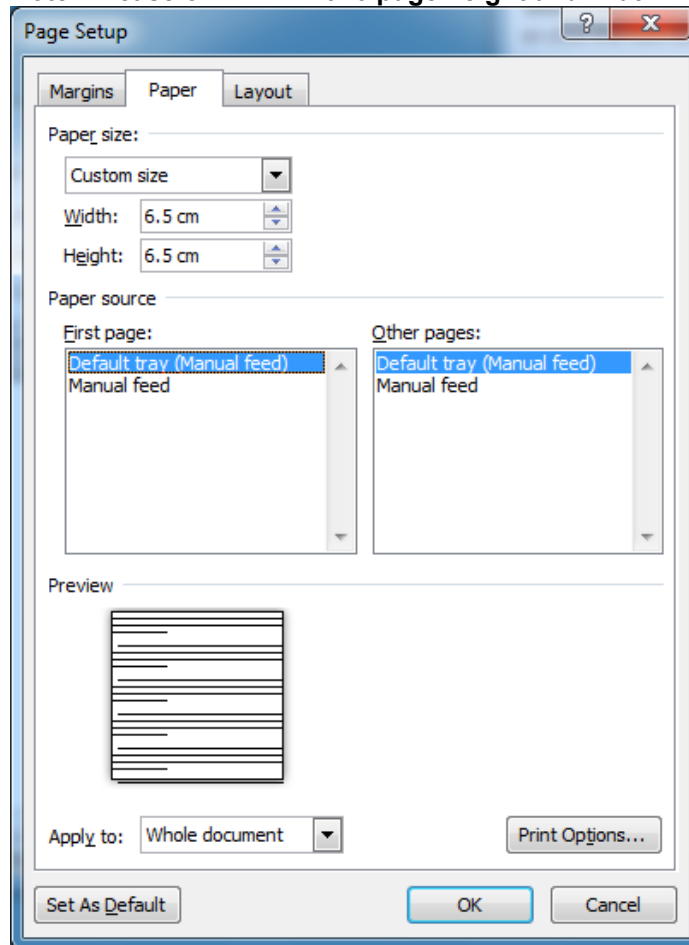


and set all borders to 0.

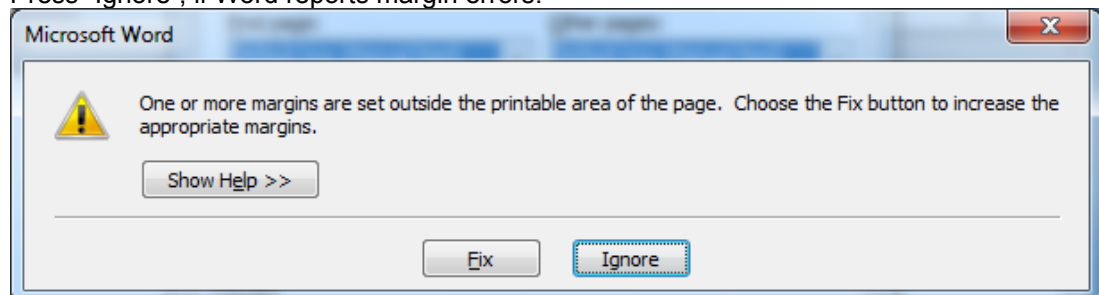


and page width and page height to 6.5 cm.

Note: In case of REINER 940 page height and width must be set to 14 cm.

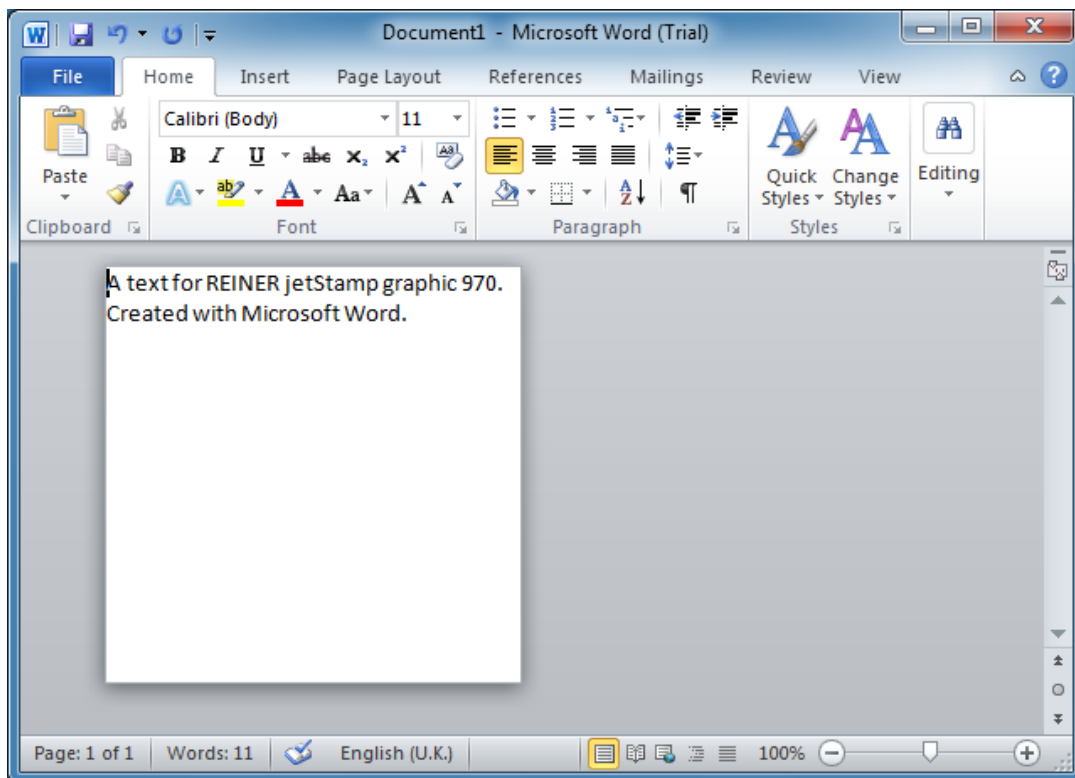


Press "Ignore", if Word reports margin errors.

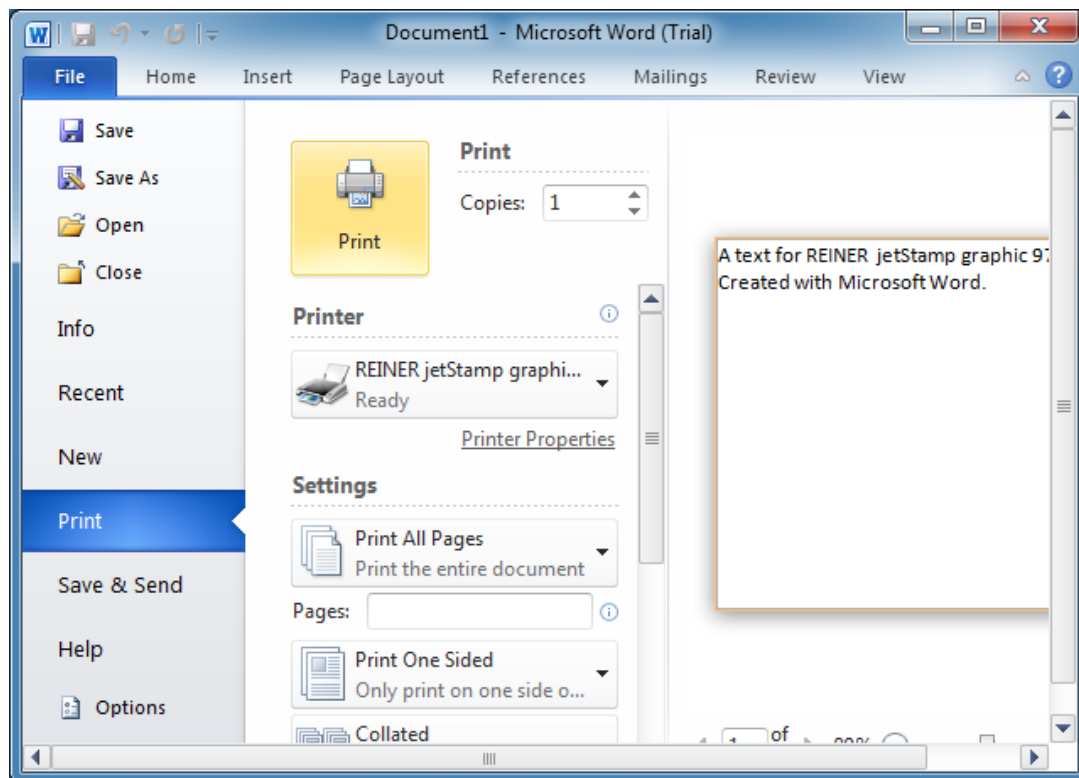


Insert a text.

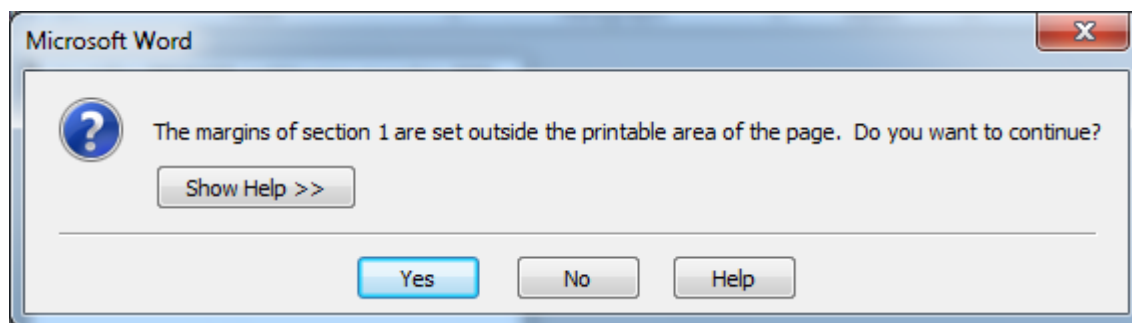
Note: The height of the print area is limited.



To print the document, go to File → Print and press “Print”.



Click button **Yes** if Word asks to continue.

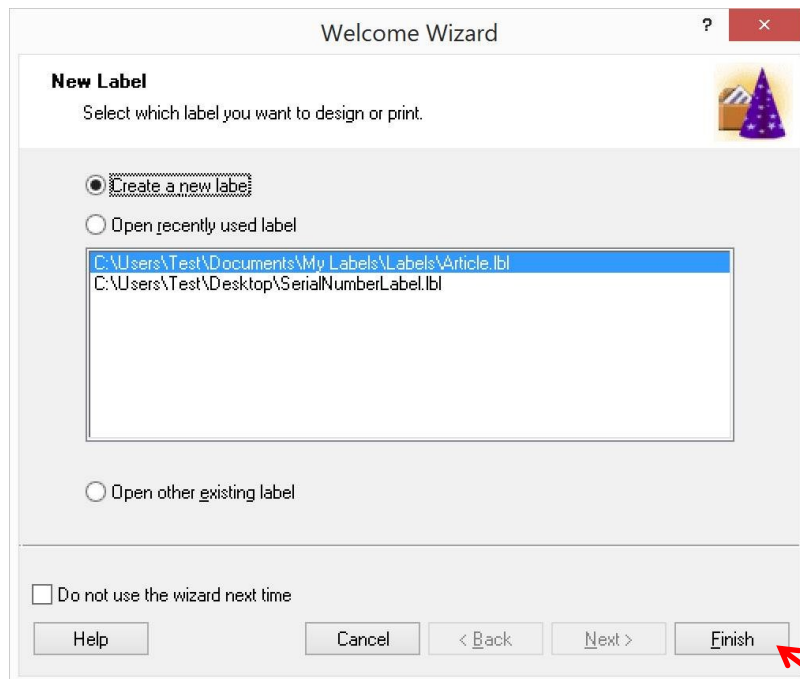


4. Use printer driver with extended functions

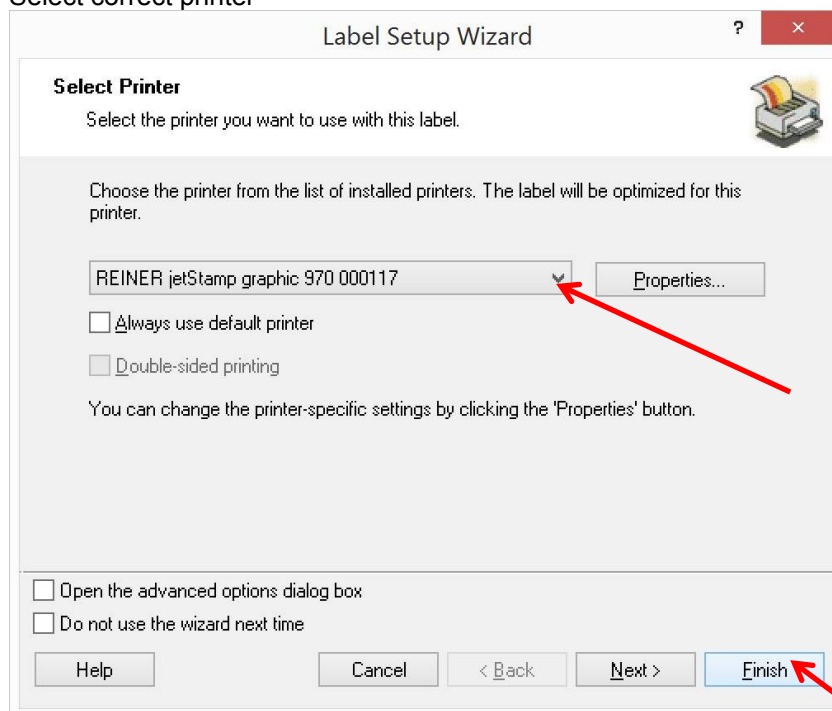
Printer driver supports also device internal functions like Counter, Date/Time or variable Barcode. These special functions are only accessible with NiceLabel Software.

The following steps are done with Software NiceLabel Designer Pro.

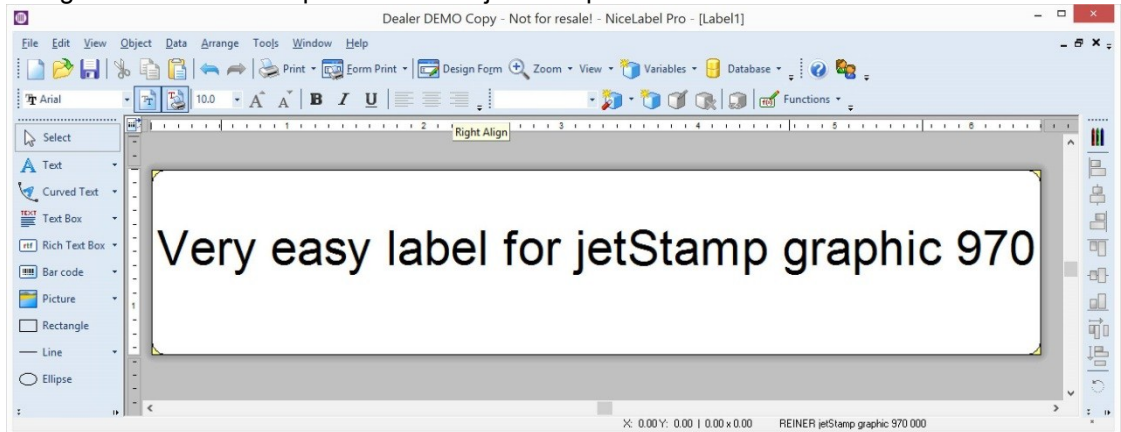
a. Create and print simple Label



Select correct printer



Design a label. For example use Text object and put a text into label.

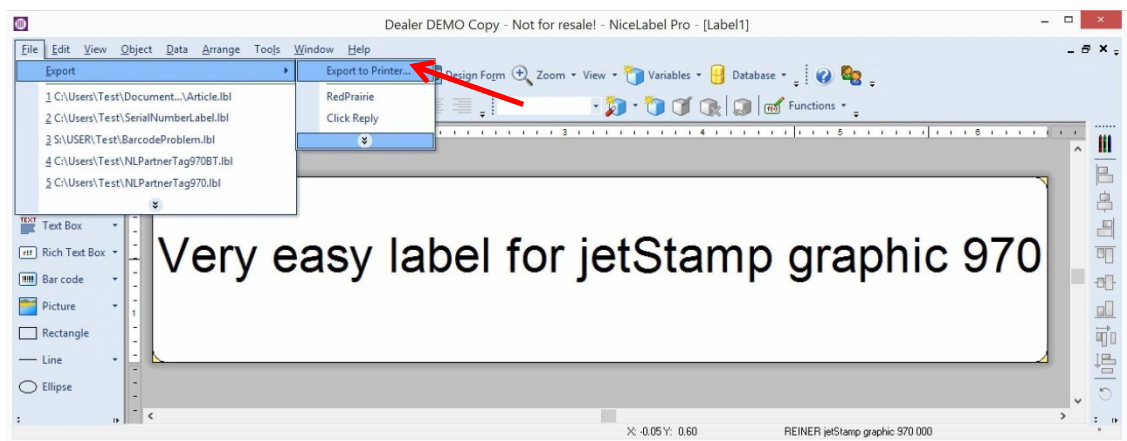


Send label to printer:

Note:

In case of USB connection turn set wheel to position **1**.

In case of Bluetooth connection turn set wheel to position **Online/Bluetooth**



Note:


The exported label can only be printed when the set wheel of the device is on position **1**.


b. Create and print difficult label with Counter, Date/Time and variable Barcode

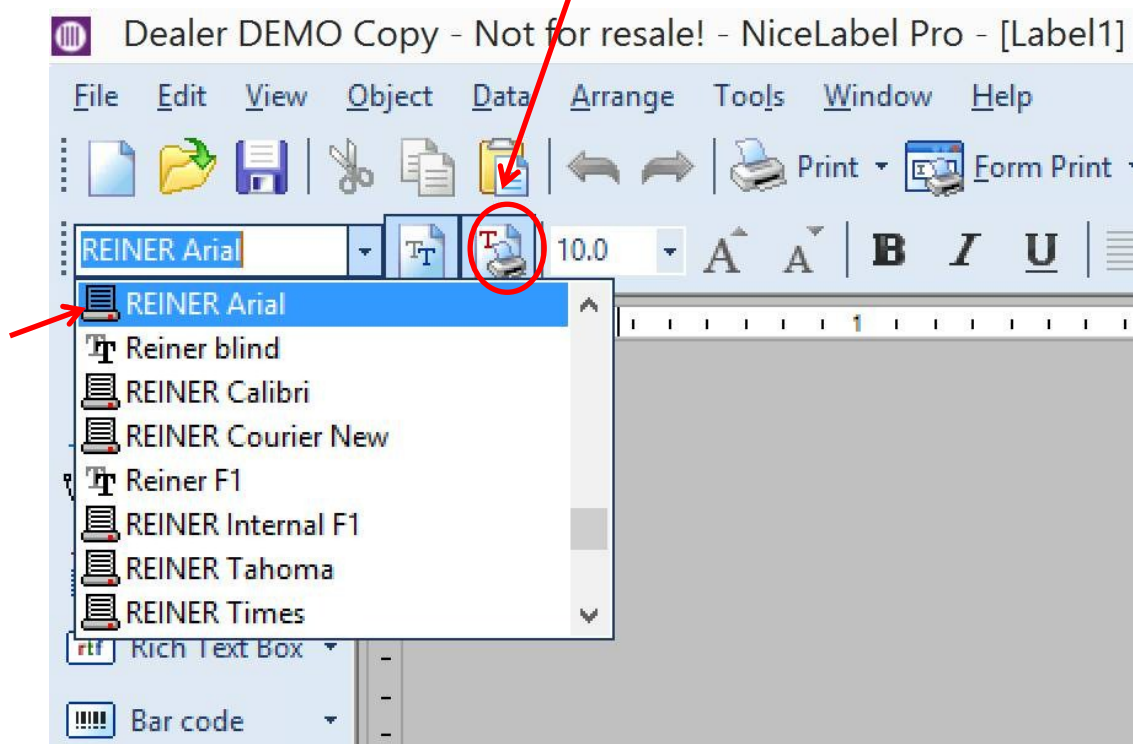
Open NiceLabel Pro and open new label as shown in chapter above.

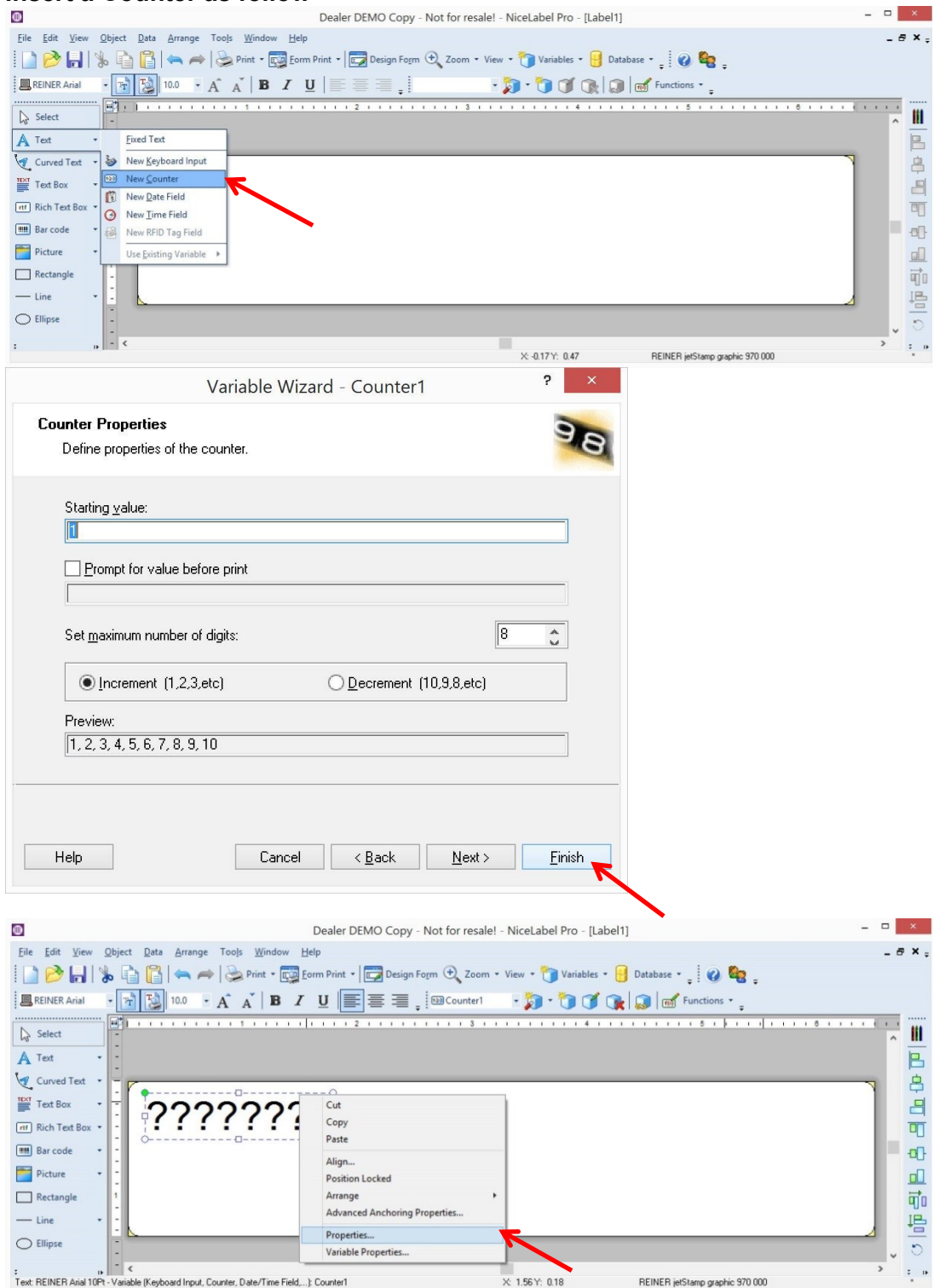
Select general font which will be used for all text based object like Text, Counter or Date. The font can be changed in the properties of each object.

Note: There are only two different fonts per label allowed.

Note: Only the fonts with printer symbol () in front can be used for counter and date/time objects.

Note: Ensure that printer fonts () are enabled



Insert a Counter as follow

Note: This Wizard isn't suitable for this chapter. Therefore disable that wizard by checking the checkbox "Do not use the wizard next time"
This is also necessary for date/time and barcode dialog.

The 'Text Wizard' dialog box is shown. It has a title bar with a question mark and a close button. The main area is titled 'Counter Properties' and contains the following fields and controls:

- Starting value: 1
- ☐ Prompt for value before print
- Set maximum number of digits: 8
- ☒ Increment (1,2,3,etc) ☐ Decrement (10,9,8,etc)
- Preview: 1, 2, 3, 4, 5, 6, 7, 8, 9, 10
- ☐ Open the advanced options dialog box
- ☒ Do not use the wizard next time

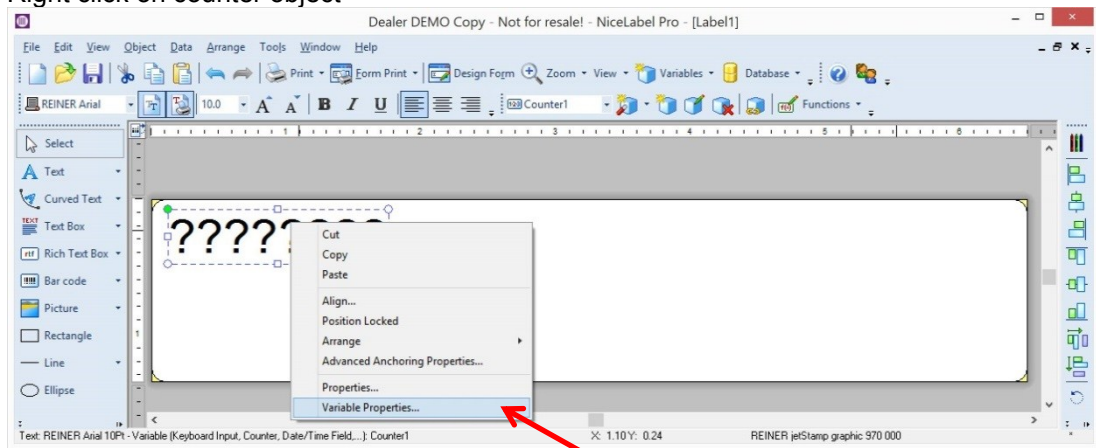
Buttons at the bottom: Help, Cancel, < Back, Next >, Finish.

The 'Text' dialog box is shown. It has a title bar with a question mark and a close button. The main area is titled 'Text' and contains the following fields and controls:

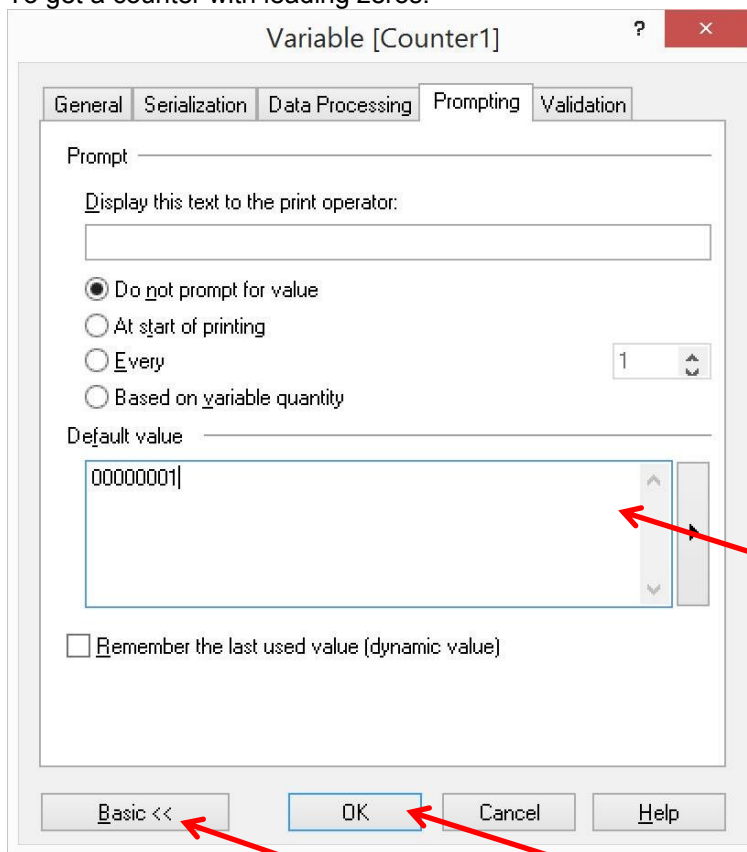
- Value Mask Style Appearance Status tabs
- Content: Select how the content for the object will be defined:
- Variable (Keyboard Input, Counter, Date/Time Field,...) dropdown
- ☒ Use the printer's internal counter
- Wizard New... Edit... buttons
- Counter1 1

Buttons at the bottom: Set Default, OK, Cancel, Help.

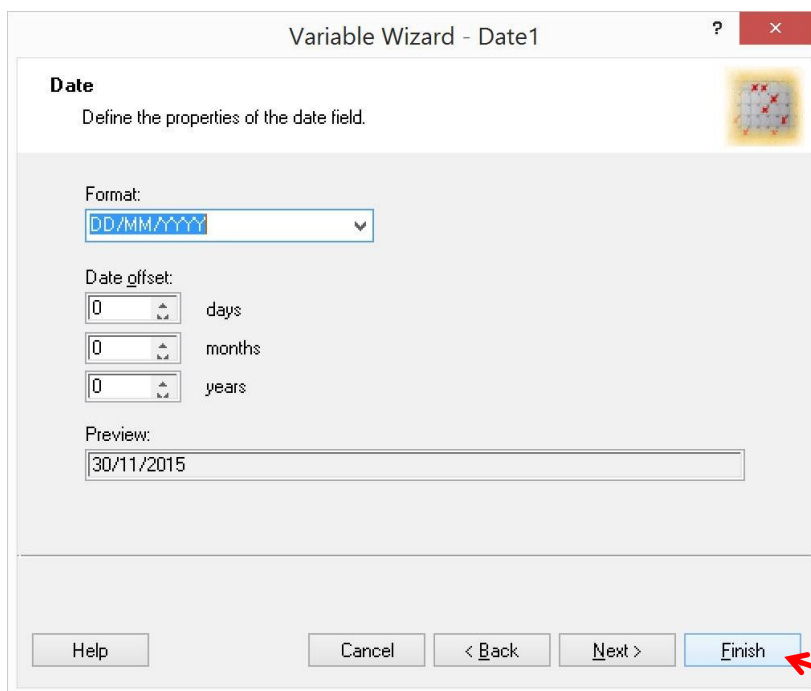
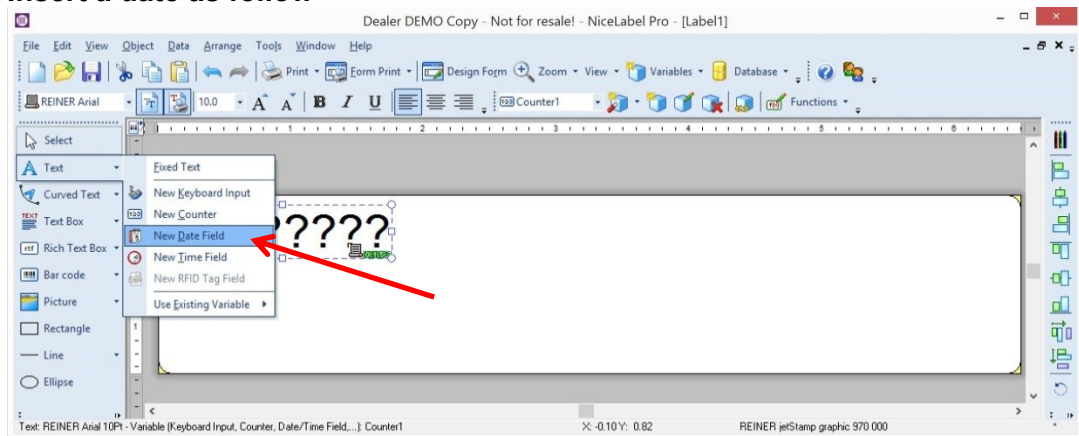
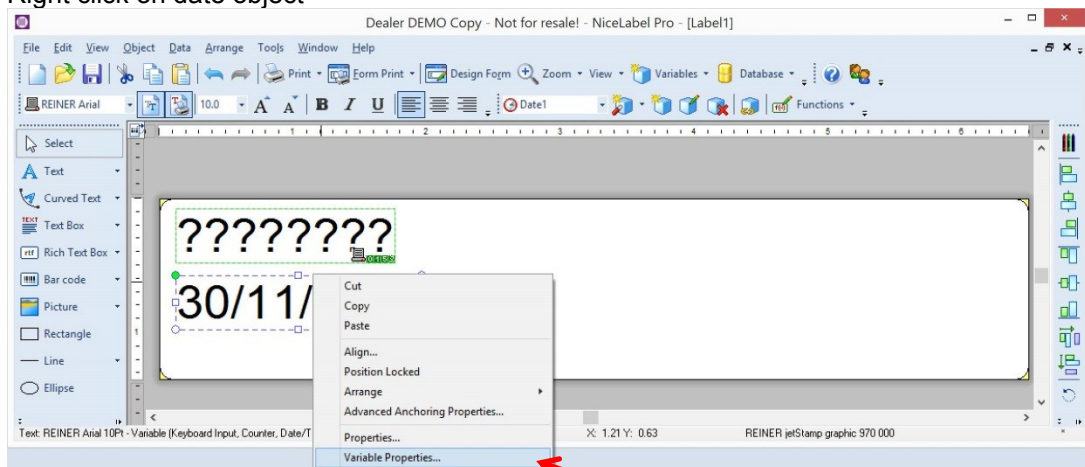
Right click on counter object

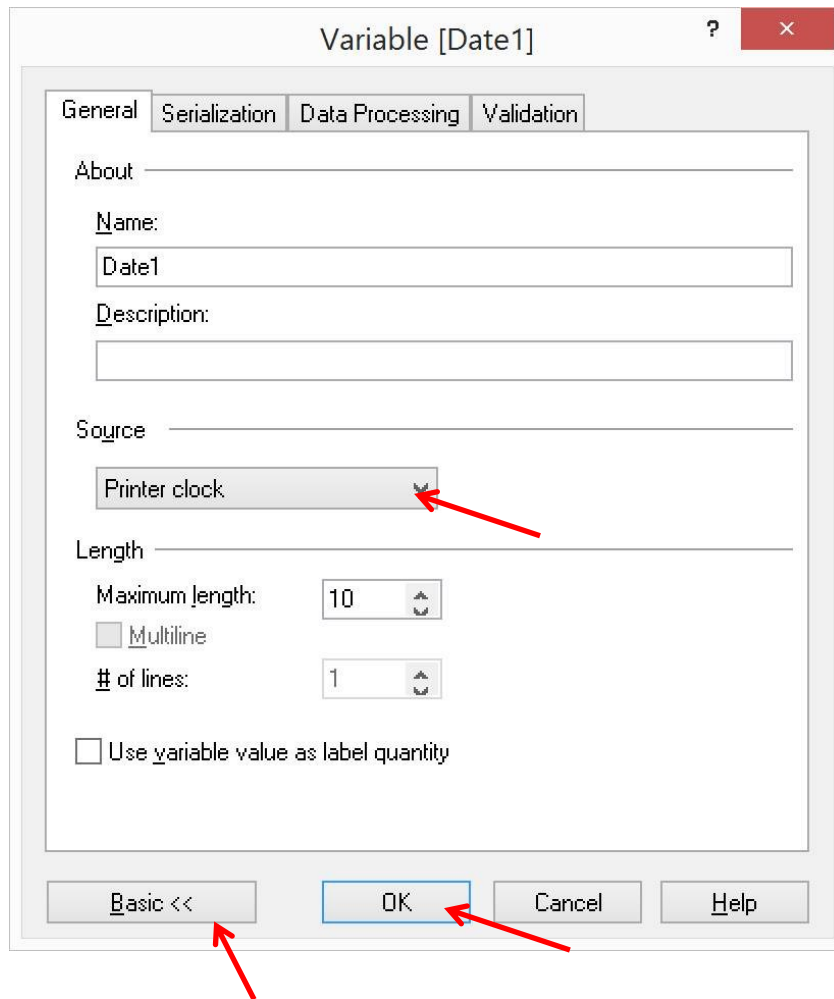


To get a counter with leading zeros.



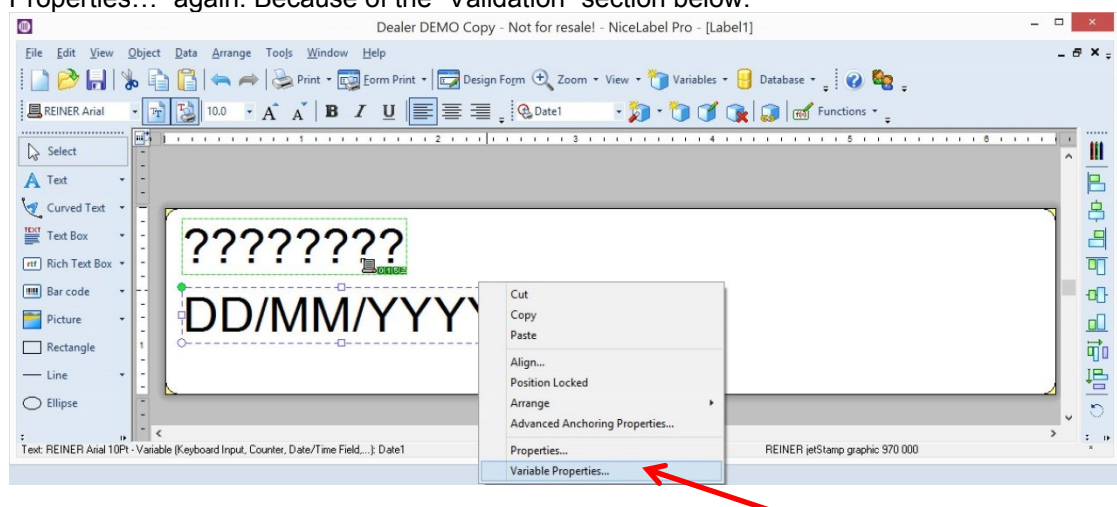
Note: To get more tabs in Dialog Click **Advanced >>** Button.

Insert a date as follow**Right click on date object**



Note: To get more tabs in Dialog Click **Advanced >>** Button.

Note: After selecting Source **Printer clock** it is important to click OK, and reopen "Variable Properties..." again. Because of the "Validation" section below.



Variable [Date1] ? x

General Serialization Data Processing **Validation**

Data

Allowable characters:

Date -./0123456789

Data type:

Date

Input format: DD.MM.YYYY

Output format: DD.MM.YYYY

£ £123.56

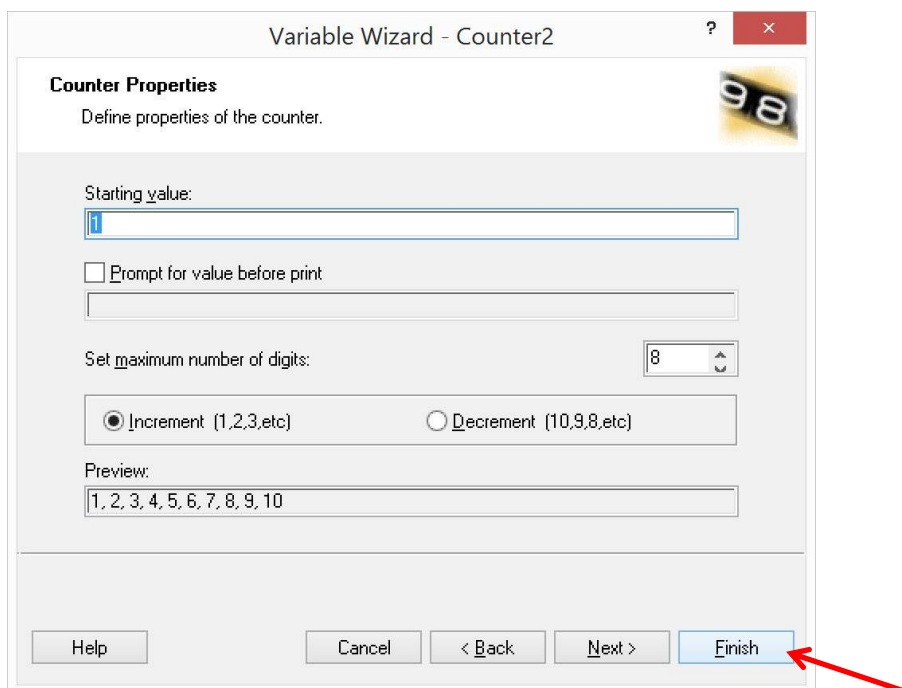
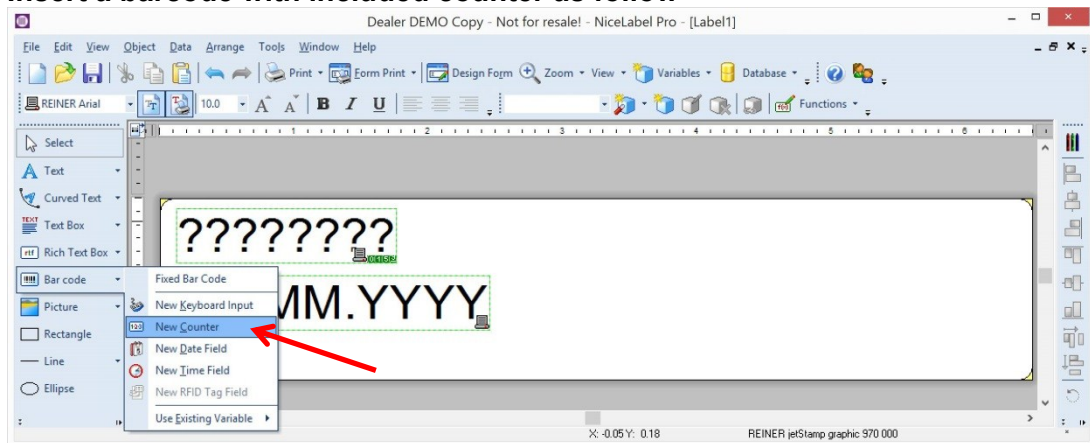
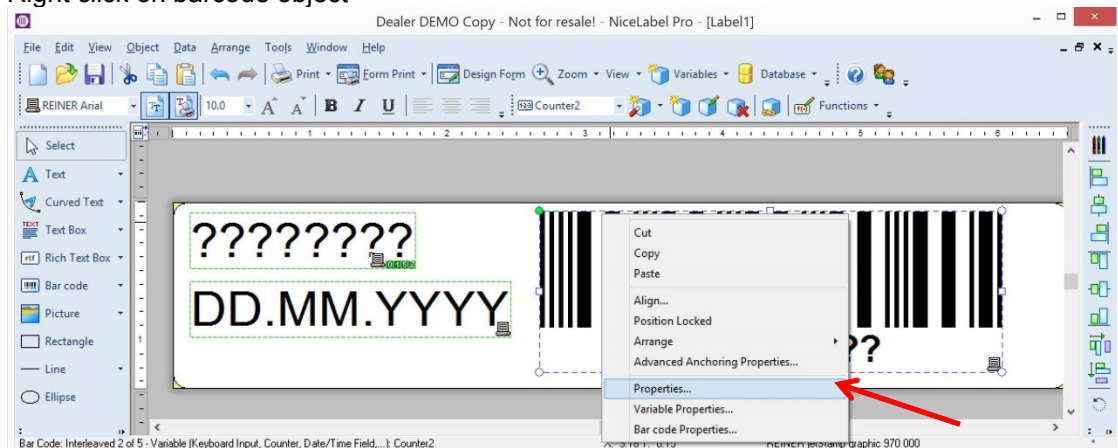
Check Range...

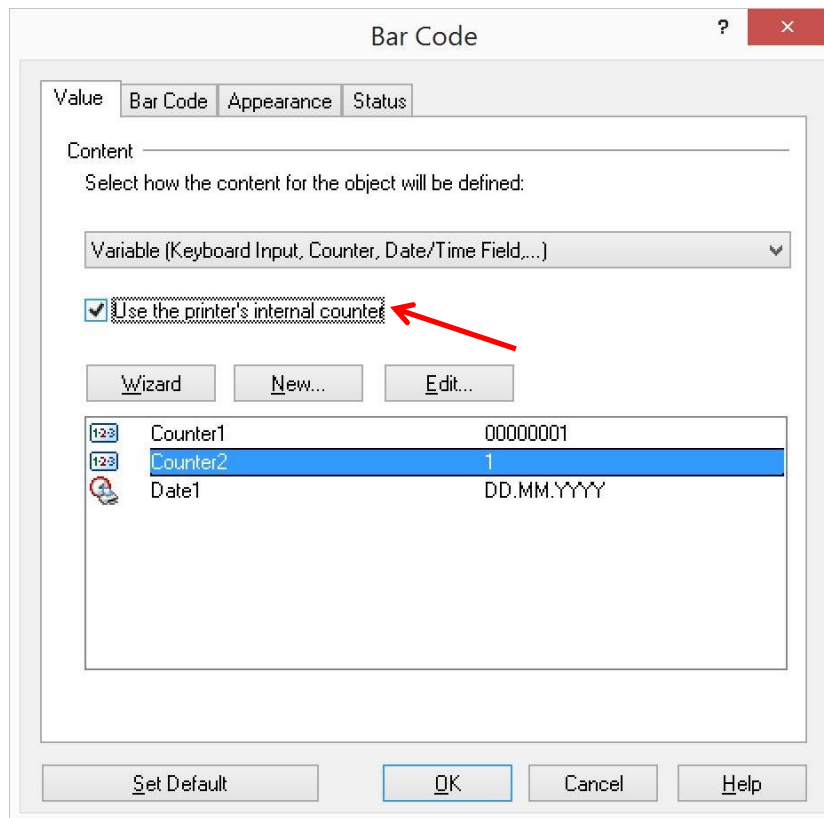
Additional Settings

☐ Value has fixed length

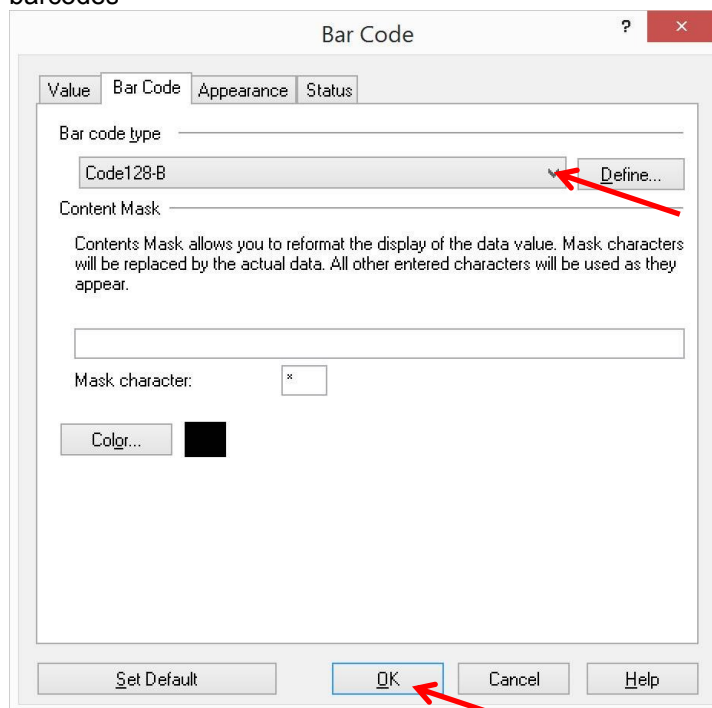
☐ Value is required

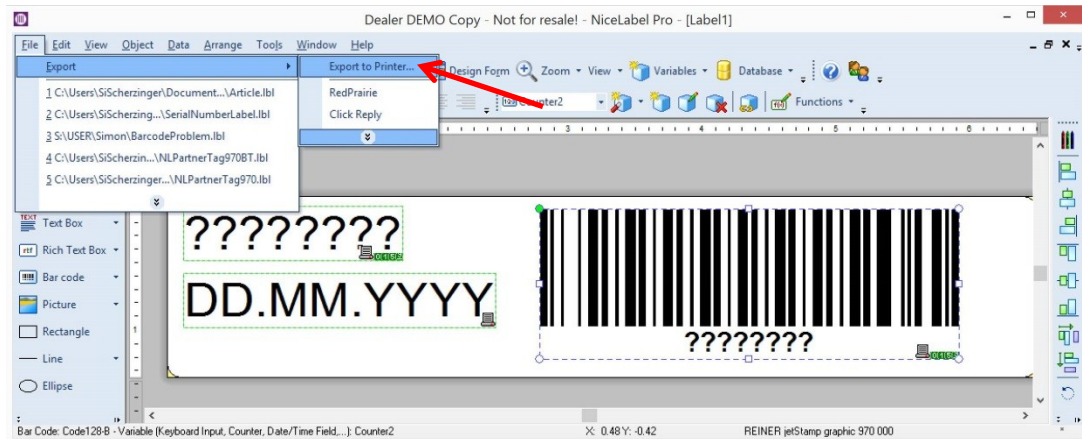
Basic << OK Cancel Help

Insert a barcode with included counter as follow**Right click on barcode object**



Note: Only Bar code type Code128-B, Code39 and Interleaved 2/5 are valid for variable barcodes

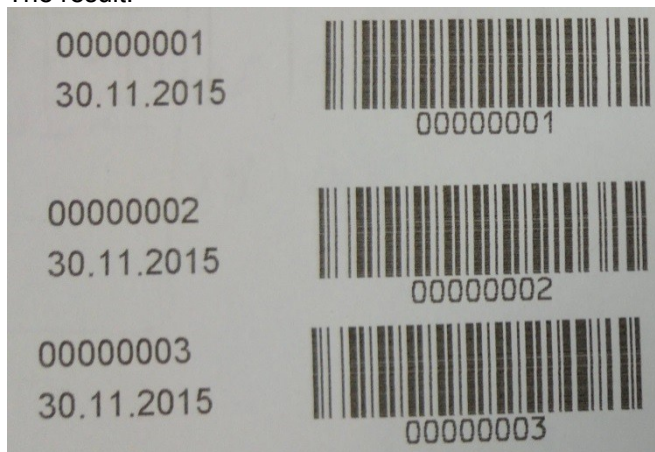




Turn set wheel to position 1



The result:



1.